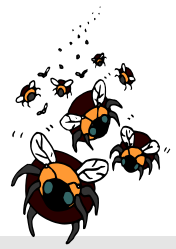




The Buzzzzzz!



Winter 2014 volume 14 issue 4

From the Editor:

By Dolly Cummings

This issue comes out late with the idea that it will include our year in review infographic. It is available on page 6 with all our stats for the 2014 year.

We'd like to thank the folks from TECO and their business associates around the area for volunteering for a workday here in November 2014. Lots of hardworking folks gave their time, skills and labor, along with materials donated by TECO, to complete several much needed projects- see page 4.

It has been a great year at Camp Bayou and 2015 promises to be even better!

Volunteers at Camp Bayou

As always, the Center is entirely operated by volunteers with funding from donations, grants and programs requesting a small fee.

If you are not already a Camp Bayou volunteer and are interested in joining the team, contact Jeri at campbayou@gmail.com or call 813-641-8545 to arrange a tour on a Saturday.

Spread the Word...

Donations are always appreciated; however, if you want to support the cause but don't have the cash, consider a materials donation- check out our wish list on the last page. You can always help by spreading the word...

The Camp Bayou Outdoor Learning Center is a partnership between **Bayou Outdoor Learning & Discovery (BOLD)** and Hillsborough County Parks, Recreation & Conservation



Spring Open House
Saturday,
3.14.15
9:26:53am
Happy Pi Day!

Scheduled activities at Camp Bayou

Saturday, March 14, 2015, 9am-1pm,
Spring Open House- Pi Day! see flyer pg 5 .

Saturday, Monthly canoe tours: call to reserve canoe 641-8545.

Saturdays, 10am- Highlight Cart Tours

Saturday, 1/19, 9am-3pm, Teacher Workshop, Schoolyard Wildlife and More, contact campbayou@gmail.com

Saturday, 1/24, noon, Readathon Hour

Saturdays, 1/31-2/28, 8am- 5pm, Florida Master Naturalist Program- Uplands Module. Register at masternaturalist.org

Off site displays:

LEEF Spring Mini-conference- Saturday, March 21, 2015, Archbold Biological Station: <http://leef-florida.org>

USF Plant Sale- April 11-12 ; 9am-3pm
<http://gardens.usf.edu>

For events that didn't make the newsletter, see our calendar at www.campbayou.org .

Our Facebook page is a busy place with posts on items of interest in the community. Like us at [Facebook.com/CampBayou](https://www.facebook.com/CampBayou)

Environmental Education in Florida



This quarter's EE focus is LEEF's 2015 Spring mini-conference at Archbold Biological Station, March 21, 2015. **LEEF** (League of Environmental Educators in Florida) conferences focus on environmental education and are a great place to find new resources, partners and educational ideas. Check out their website and register online at <http://leef-florida.org>.

Citizen Science Spotlight



This month's Citizen Science spotlight is the Great Backyard Bird Count- February 13-16, 2015. Launched in 1998 by the Cornell Lab of Ornithology and National Audubon Society, the Great Backyard Bird Count was the first online citizen-science project to collect data on wild birds and to display results in near real-time. For more information and to register, visit <http://gbbc.birdcount.org>.

Citizen Science is...

research that combines the time and interest of volunteers with the skills of scientists to learn about our world. A list of citizen science projects, with links, is located on our blog at www.citizenscienceatcampbayou.blogspot.com.

The Buzzzzzz! Winter 2014

Schoolyard Wildlife Teacher Workshop

We had to postpone a scheduled teacher workshop in December due to lack of participants. We rescheduled our Schoolyard Wildlife Teacher Workshop for MLK Day, Monday, January 19 from 9am-3pm.

This curriculum is one of many guides that the Florida Fish and Wildlife Conservation Commission offer, free of charge, for those who attend a workshop.

The [Schoolyard Wildlife Guide](#) is an older curriculum but all the information and activities are as relevant as they were when it was first published. What is particularly interesting is that it was developed for a strictly Florida audience. You won't find any salmon or elk in here as you might in one of those nationally distributed guides.

There will also be correlations to activities in other guides such as Project Learning Tree so you can mix and match your lessons under a similar theme.

With Camp Bayou's persistent interest in Citizen Science, there will also be correlations for some activities to programs that collect data for real science studies plus some options for working with data in and out of the classroom.

With Next Generation Science Standards in mind, this workshop will include opportunities for observation, inquiry, comparison and other skills to take science to a new level.

This workshop is appropriate for public and private school teachers, summer camp counselors, nature center staff, parks personnel and homeschool parents (sorry, this is an adults only workshop).

Contact Dolly for more information and to register at campbayou@gmail.com

Fall Highlights



Lots to do at the Fall Open House

Open House



Exploring the Fossil Museum



Nature Walks with Becki



Native Camp Tours with Troop 2140



Fun in Native Camp with Malia



Photo Contest Winners:

1st - "Sunset Off the Bayou" Dolly Cummings
2nd - "Orange U Happy?" Suzanne S. Austin-Hill
3rd - "#4" - Suzanne S. Austin-Hill

People's Choice-

"Baby Gopher Tortoise at Lunch" - Dolly C

See them all at Camp Bayou!.

Thank you TECO!



Starting the day...

Workday- Nov 2014



Taking care of erosion issues.



Ready to make tables & benches.



Putting finishing touches on kiosk.



Leveling the hog damage.

The Buzzzzz! Winter 2014



Installing butterfly habitat signs.



Camp Bayou Spring Open House

Saturday, March 14, 2015

9am- 1pm

Pi Day Activities:

- o Ant lion safari
- o Gopher tortoise GPS
- o Spider webbing
- o Water cycle game
- o Bubble making
- o Fire circle stories
- o Nature's homes
- o Tie dye- bring your own
- o t-shirt
- o And more!

Happy Pi Day!

3.141592653...

9am: Activity tables open

9:26:53am: Celebrate this special Pi Day
moment with Bubbles!

10am: GPS burrow scavenger hunt

10:30am: Speaker- Joann from C.A.R.E.

11am: Storytime in the Round

11:30am: Lunch fundraiser- circle foods!

12pm: Loop trail hike

12:30pm: Final door prize drawing

1pm: Thanks for sharing Pi Day with us!

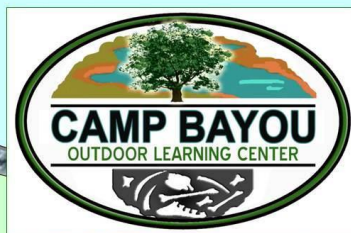
Camp Bayou is located
3 miles south of SR
674 at the end of 24th
St SE in Ruskin.

813-641-8545

www.campbayou.org



Our Year in Review



Self-guided activities:

- Geocaching
- Letterboxing
- Little Free Library
- Native Peoples Camp
- Nature Center
- Butterfly Habitat
- ~4 miles of trails

Programs by the Numbers

- school groups ~ 592 kids
- home school ~ 15 kids
- FMNP class - 21 adults
- Guided canoe tours ~ 67 paddlers
- General Visitors ~ 711
- Year-round Volunteers- 40
- One-day Volunteers- 156
- Total Volunteer Hours- 3934

Off-site Events:

- Little Manatee River State Park
- EPCOT- Fresh from Florida weekend
- USF Plant Sale
- Nature's Classroom

Events:

- Spring Open House
- National Trails Day
- Back to School-Back to Nature
- Fall Open House
- Night Paddles
- Cleanup Days

All of this made possible with support from
our Community, dedicated Volunteers and the
Board of

B.O.L.D.

Bayou Outdoor Learning & Discovery, Inc.

www.campbayou.org

2014

Supporter- New or Renewal (circle one)

Date: _____

Name: _____

Address: _____

City/State/Zip: _____

Email: _____

Camp Bayou

Member Donation:

\$ _____

Our newsletter is announced quarterly by email and also available online at www.campbayou.org .

cut here - - - mail to: - - - Camp Bayou/BOLD - - P.O. Box 507. - - - Ruskin, FL - - - 33575-0507

Supporter Updates:

Renew:

Barbara Fite

Diane Alvarez

Diane Sullivan

New:

Georgine Adams

Gabriel & Shana Saffold

Donations:

Multi- TECO-see page 4

**Interfaith Council- funds for
classroom renovation**

**Volunteer hrs since
Jan 2014:**

3934

Wish List

- | | |
|--------------------------------|--------------------------|
| ➤ Vintage boating/fishing gear | ➤ Rakes/shovels |
| ➤ Dwyer combo kitchen unit | ➤ Reclining beach chairs |
| ➤ Photos of gill netting | ➤ Pruning shears |
| | ➤ Photo mats |

Camp Bayou Outdoor Learning Center Information

Camp Bayou Preserve is located 3 miles south of SR 674 (exit 240 west off I-75) at the end of 24th St. SE, along the Little Manatee River in Ruskin.

Phone: 813-641-8545

Email: campbayou@gmail.com

Website: www.campbayou.org

Bayou Outdoor Learning & Discovery, Inc.

- | | |
|--------------------|------------------|
| • Jeri Hundertmark | • Donna Carty |
| • George Shambaugh | • Becki Stafford |
| | • D. Cummings |

Get Social!

Find us at www.facebook.com/CampBayou;

Or follow [@campbayou](https://twitter.com/campbayou) on Twitter;

Subscribe to the blog campbayou.blogspot.com

Shop for a cause www.igive.com/campbayou

Donate online www.razoo.com/story/Bayou-Outdoor-Learning-And-Discovery

