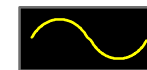


# Alafia River from Alderman Ford Park to HWY 301

Section - Township - Range  
18-30-22

9-11, 13-20 & 24-30-21

9, 10, 15-17, 21, 23 & 24-30-20  
18-30-22



Contour Lines  
Expressed in  
2-Foot Intervals



River Perimeter  
Ground Level

## EXPLANATION:

Survey Date: August 19, 2010 and  
September 1, 2010

River Gage height was 15.79 ft  
above sea level at time of assessment at  
USGS 02301500.

Contours are expressed in absolute depth  
below this level.

## RIVER MORPHOLOGY:

Perimeter 224,496.8 ft;

Area 242.66 Acres

Mean Depth 6.28 ft;

Volume 242.7 Acre-ft, (384,093,598 gallons);

Deepest point 29.14 ft

## DATA SOURCES:

2007 aerial photography provided by the  
SWFWMD.

River perimeter digitized from SWFWMD  
2007 aerial photographs.

All survey data collected by and contours  
generated by the Florida Center  
for Community Design and Research.

## DISCLAIMER:

This map is for illustrative purposes only,  
and should not be used for river navigation.

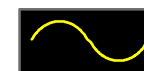
0 5,000 10,000 15,000 20,000 Feet





# Alafia River from Alderman Ford Park to HWY 301 StreamWater Watch Sites

Section - Township - Range  
18-30-22  
9-11, 13-20 & 24-30-21  
9, 10, 15-17, 21, 23 & 24-30-20  
18-30-22



Contour Lines  
Expressed in  
2-Foot Intervals



River Perimeter  
Ground Level  
Hillsborough County  
SWW Sites



## EXPLANATION:

Survey Date: August 19, 2010 and  
September 1, 2010  
River Gage height was 15.79 ft  
above sea level at time of assessment at  
USGS 02301500.  
Contours are expressed in absolute depth  
below this level.

## RIVER MORPHOLOGY:

Perimeter 224,496.8 ft;  
Area 242.66 Acres  
Mean Depth 6.28 ft;  
Volume 242.7 Acre-ft, (384,093,598 gallons);  
Deepest point 29.14 ft

## DATA SOURCES:

2007 aerial photography provided by the  
SWFWMD.  
River perimeter digitized from SWFWMD  
2007 aerial photographs.  
All survey data collected by and contours  
generated by the Florida Center  
for Community Design and Research.

## DISCLAIMER:

This map is for illustrative purposes only,  
and should not be used for river navigation.

0 5,000 10,000 15,000 20,000 Feet



Alafia River N. Prong - Alderman Ford Park

Alafia River - US Highway 301

Alafia River - Church Drive

Alafia River - Ethyl Street

Alafia River - Alafia Ridge Road

Alafia River - McMullen Loop Road

Alafia River - Turkey Creek Road

Alafia River - River Hills Parkway

Alafia River - Lithia Springs Park

Alafia- Oak River Circle

Alafia River - Bell Shoals Road

Alfia River - Enders Dock

Alafia River - Rice Creek

Alafia River - Riverview Park and Civic Center

Alafia River S. Prong - Alderman Ford



Figure 1  
Alafia River Downstream  
from Alderman Ford  
Park





Figure 2  
Alafia River Downstream  
from Alderman Ford  
Park





Figure 3  
Alafia River Downstream  
from Alderman Ford  
Park Upstream from  
Turkey Creek Road SWW Site





Figure 4  
Alafia River at  
Turkey Creek Road SWW Site

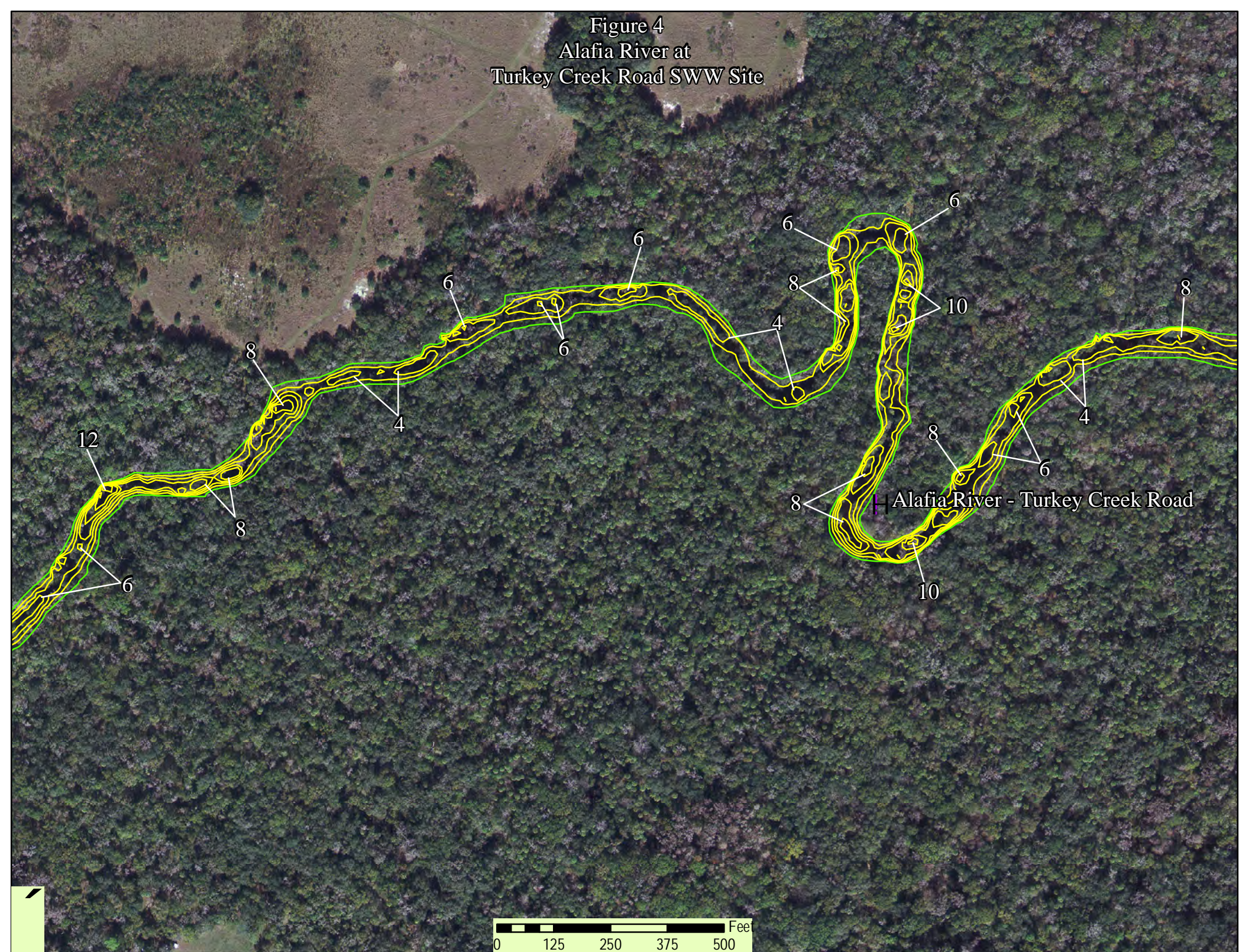




Figure 5  
Alafia River Downstream from  
Turkey Creek Road SWW Site

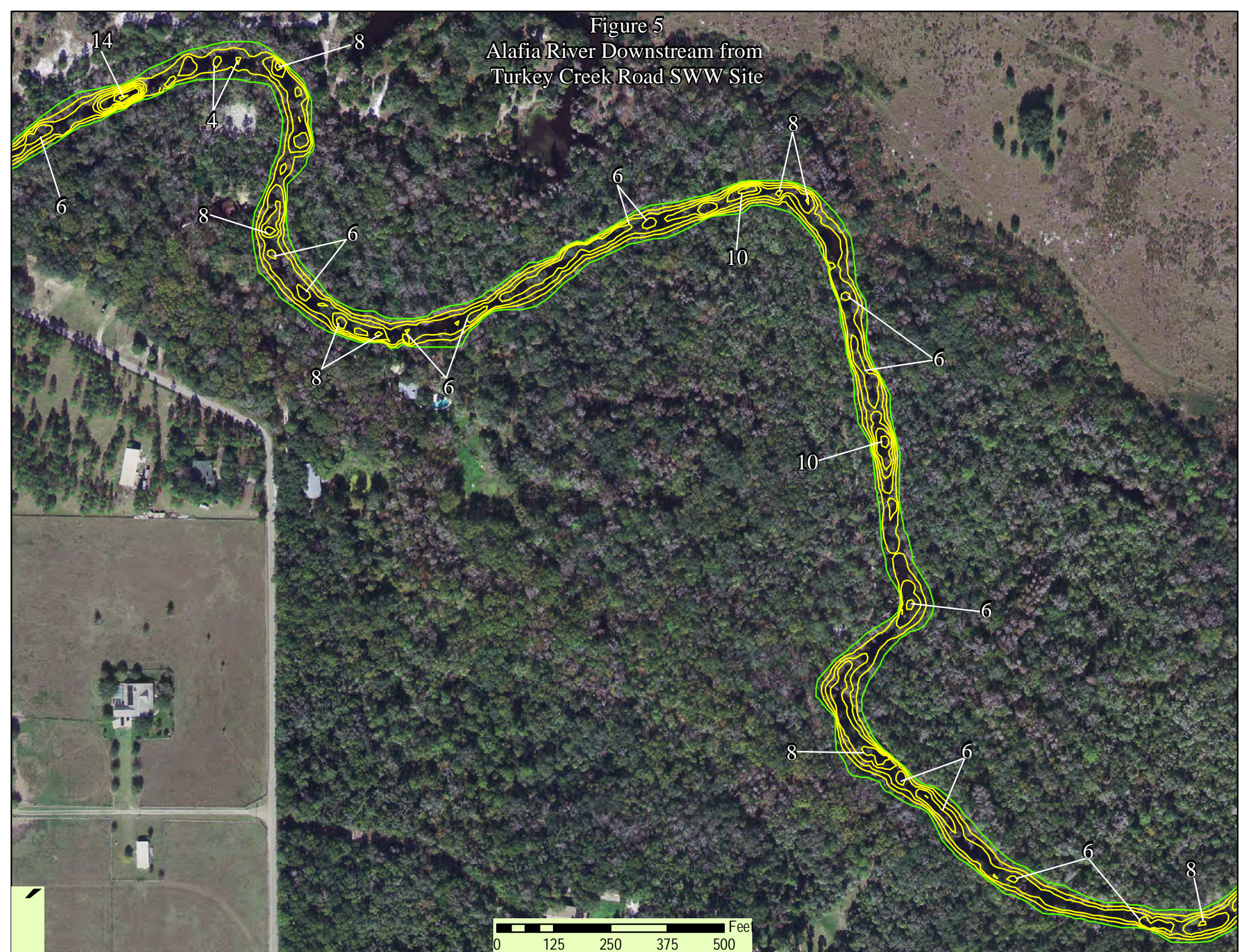




Figure 6  
Alafia River Downstream from  
Turkey Creek Road SWW Site





Figure 7  
Alafia River Downstream from  
Turkey Creek Road SWW Site





Figure 8  
Alafia River Downstream from  
Turkey Creek Road SWW Site

0 125 250 375 500 Feet





Figure 9  
Alafia River Downstream from  
Turkey Creek Road SWW Site





Figure 10  
Alafia River Upstream from  
River Hills Parkway SWW Site

0 125 250 375 500 Feet

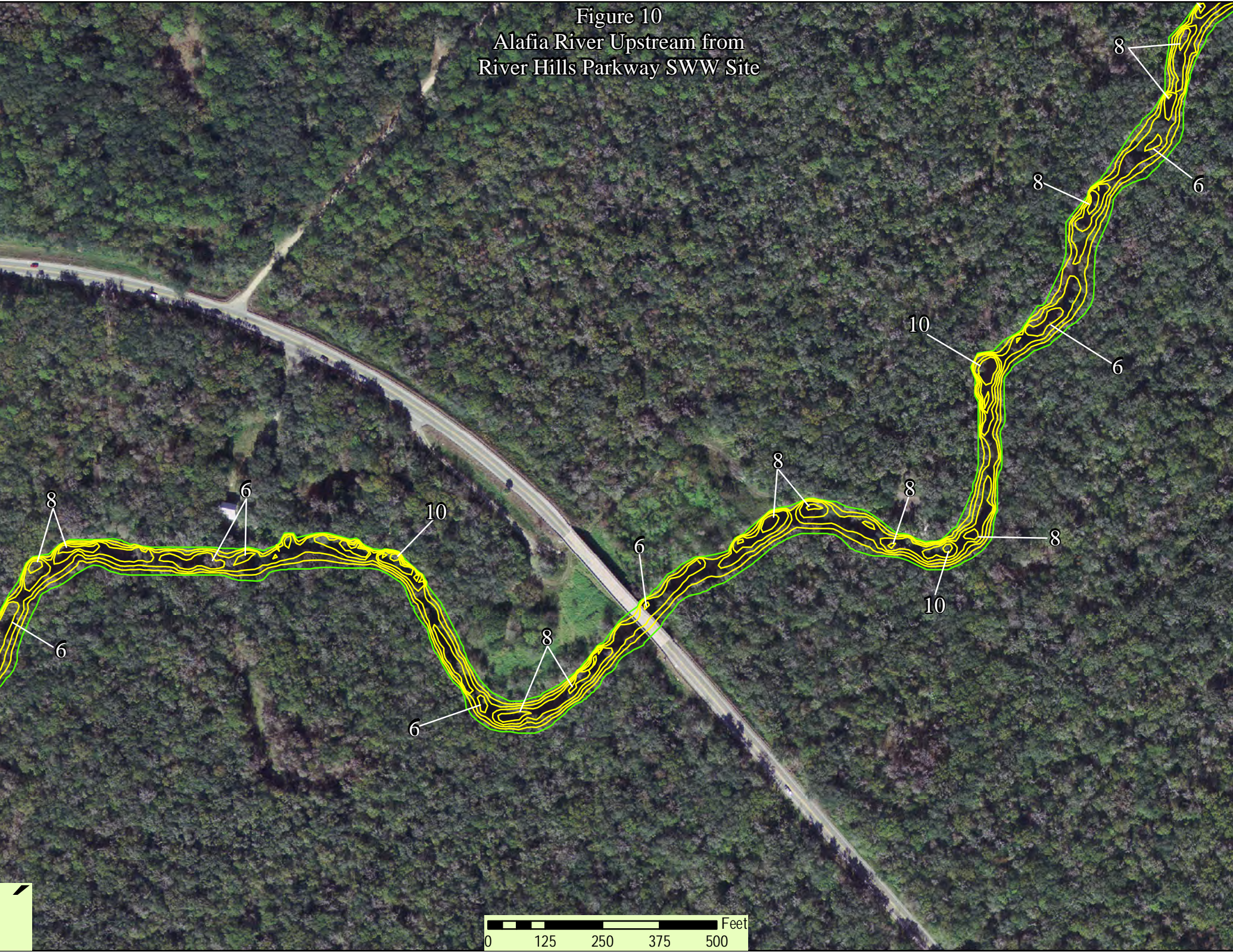




Figure 11  
Alafia River at  
River Hills Parkway SWW Site

Alafia River - River Hills Parkway

0 125 250 375 500 Feet





Figure 12  
Alafia River at  
Lithia Springs Park SWW Site

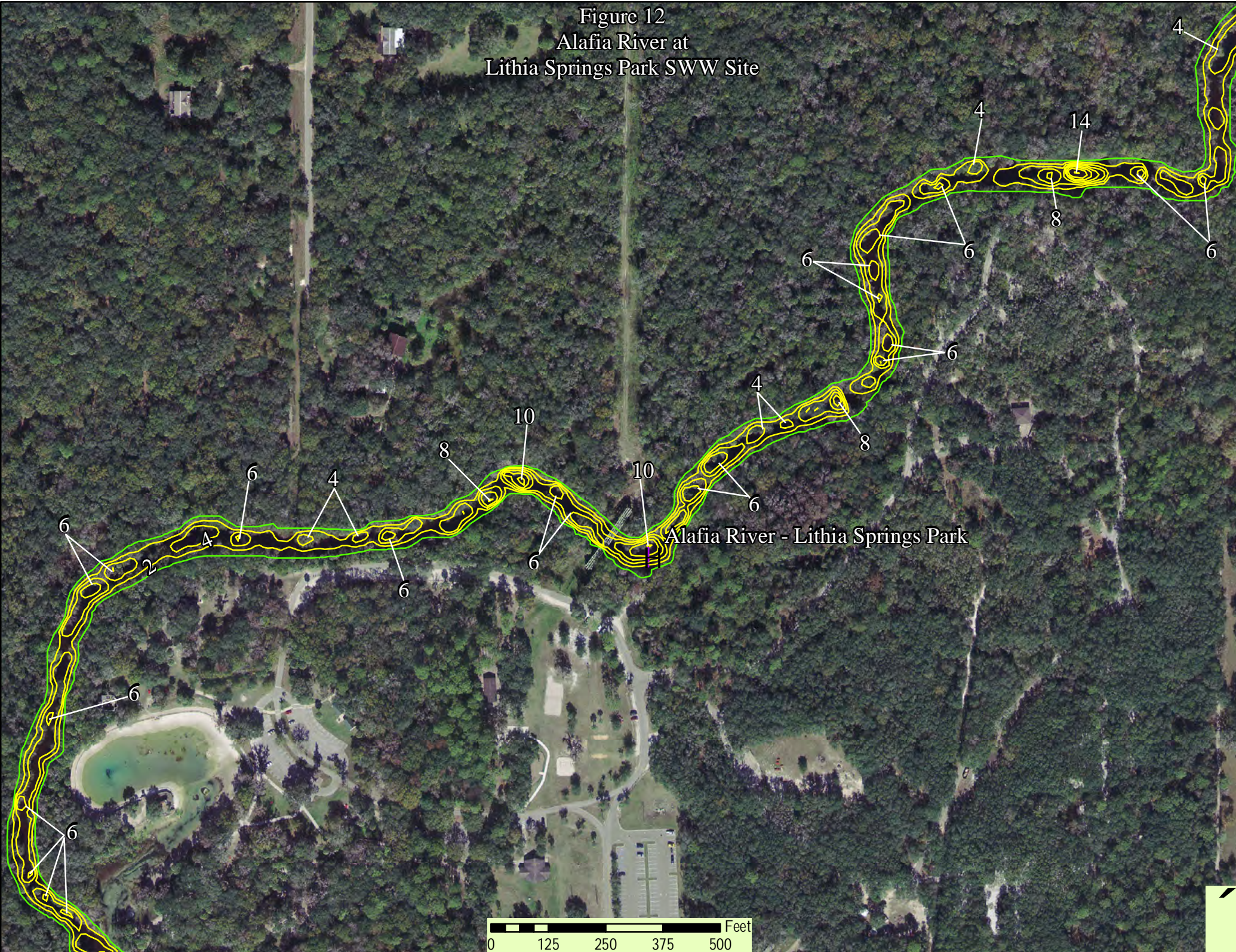




Figure 13  
Alafia River Downstream From  
Lithia Springs Park SWW Site





Figure 14  
Alafia River Upstream From  
Oak River Circle SWW Site

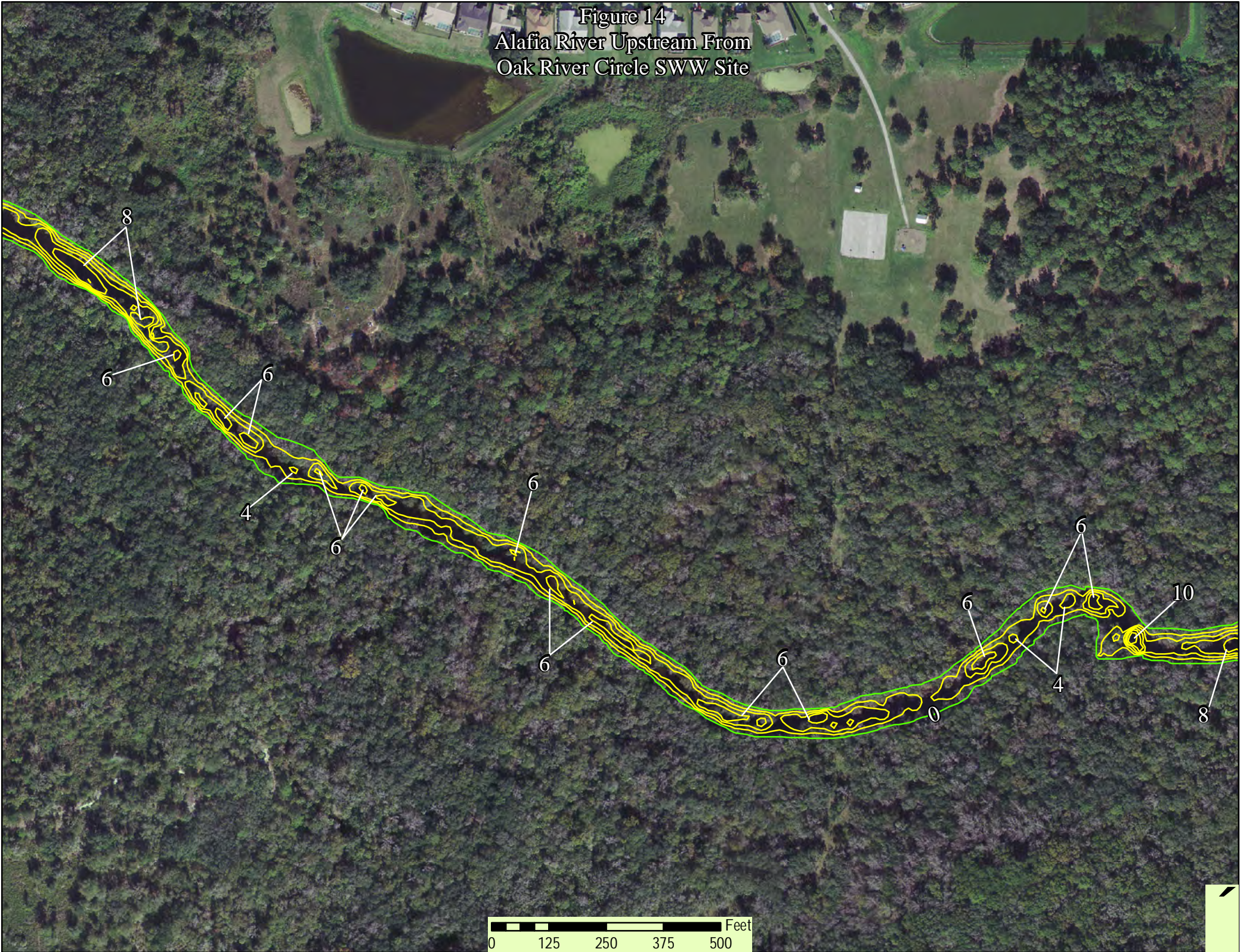




Figure 15  
Alafia River At  
Oak River Circle SWW Site

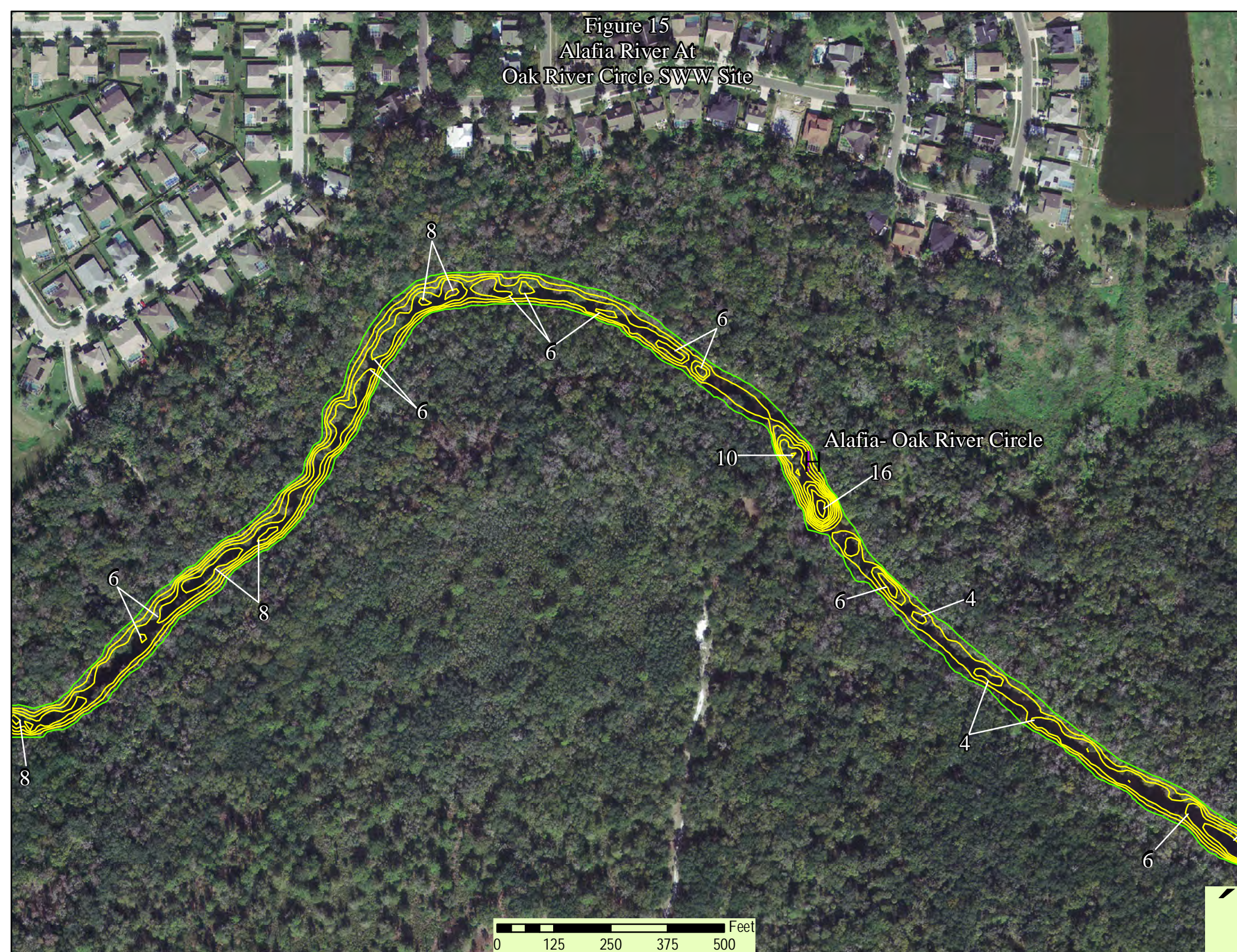




Figure 16  
Alafia River Downstream From  
Oak River Circle SWW Site

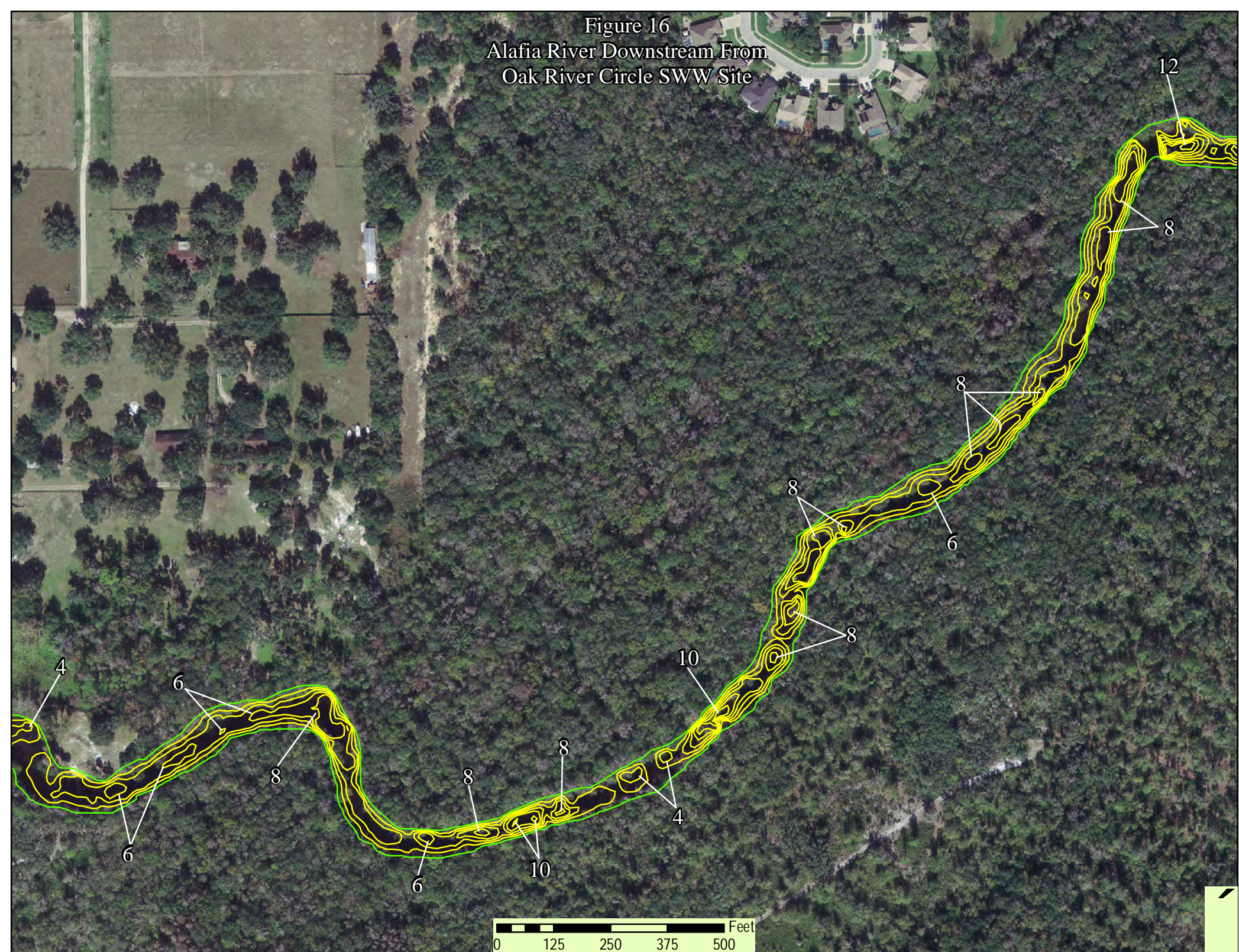




Figure 17  
Alafia River At  
Bell Shoals Road SWW Site

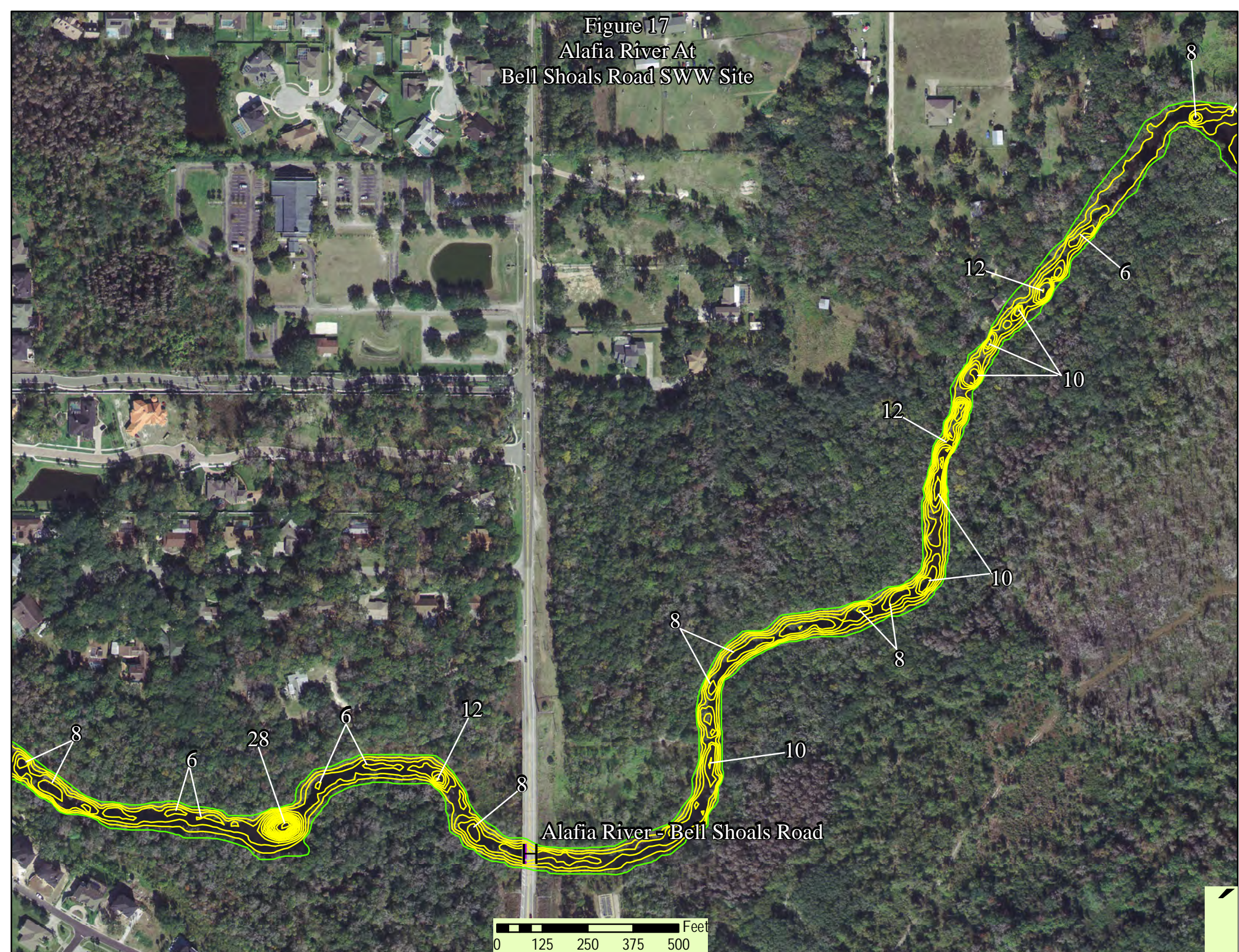




Figure 18  
Alafia River Downstream From  
Bell Shoals Road SWW Site

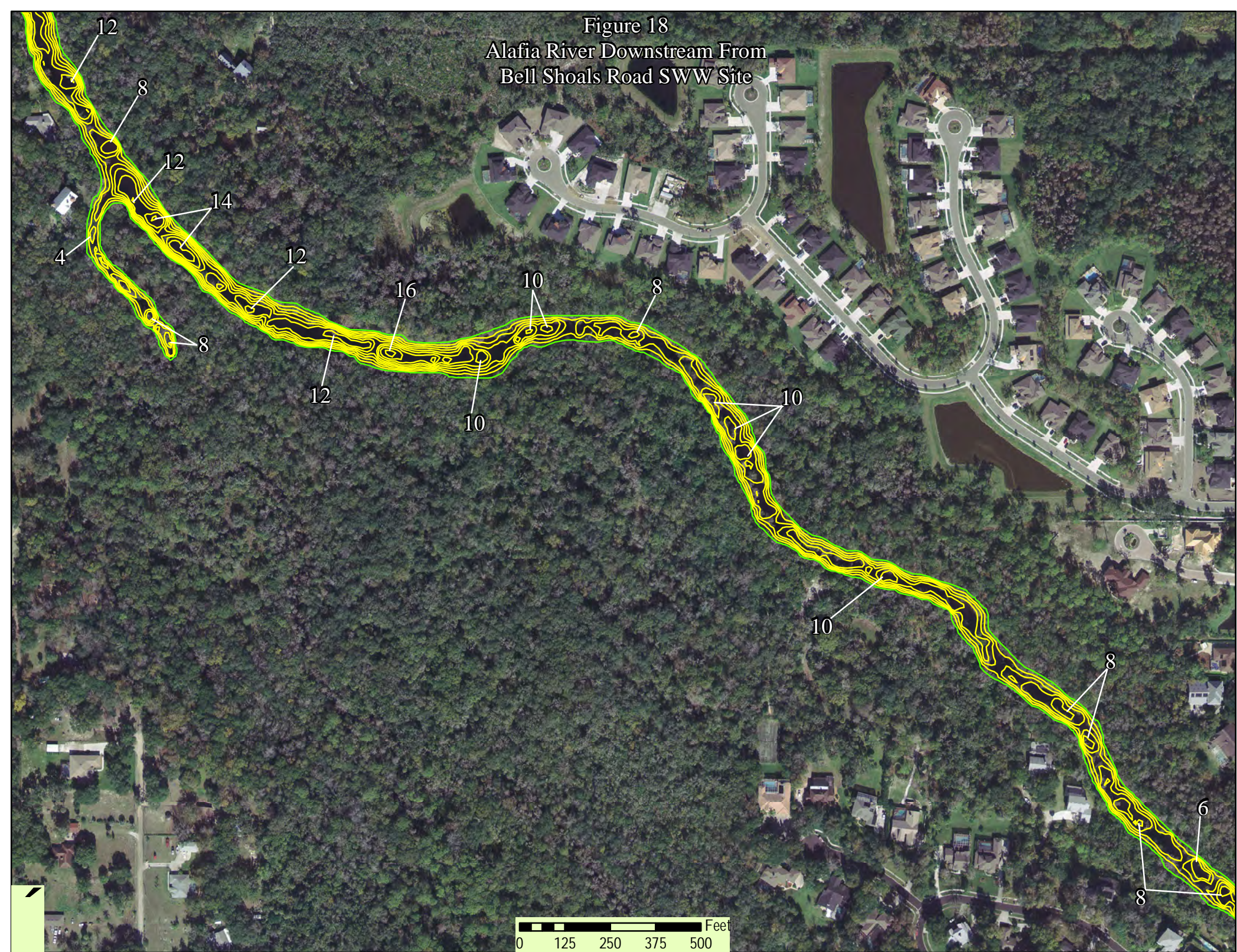




Figure 19  
Alafia River Upstream From  
McMullen Loop Road SWW Site

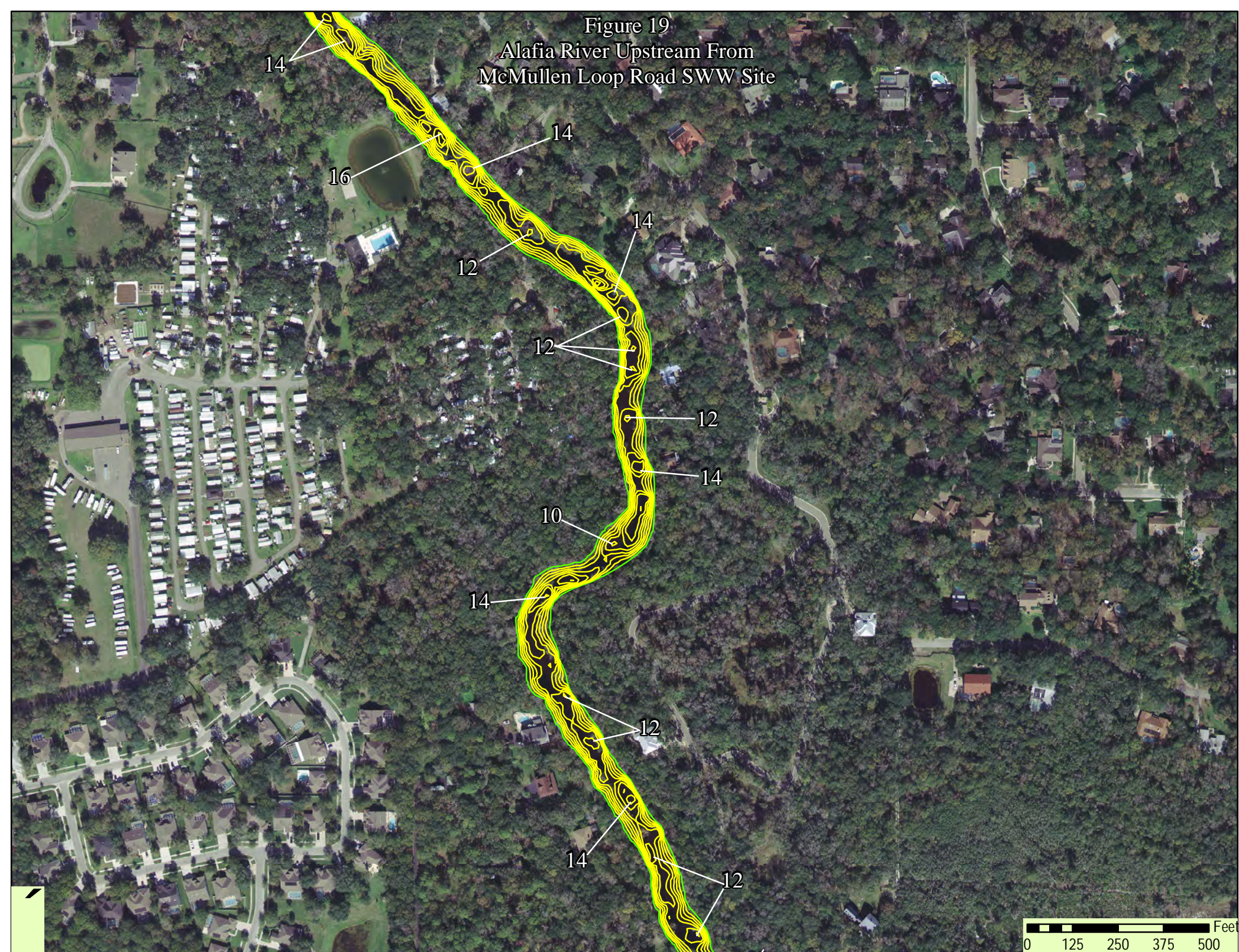




Figure 20  
Alafia River At  
McMullen Loop Road SWW Site

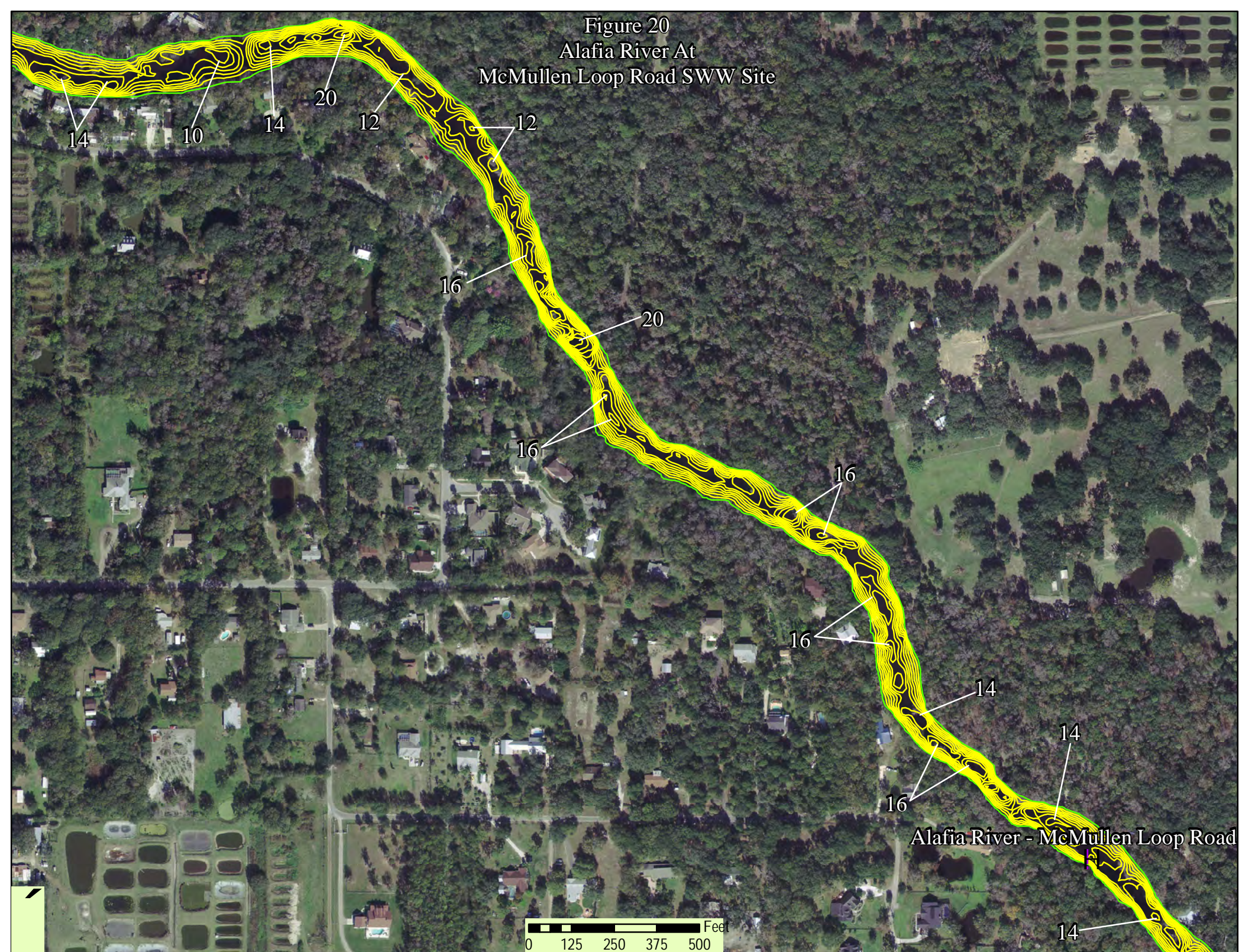




Figure 21  
Alafia River At  
Alafia Ridge Road SWW Site  
and Ethyl Street SWW Site

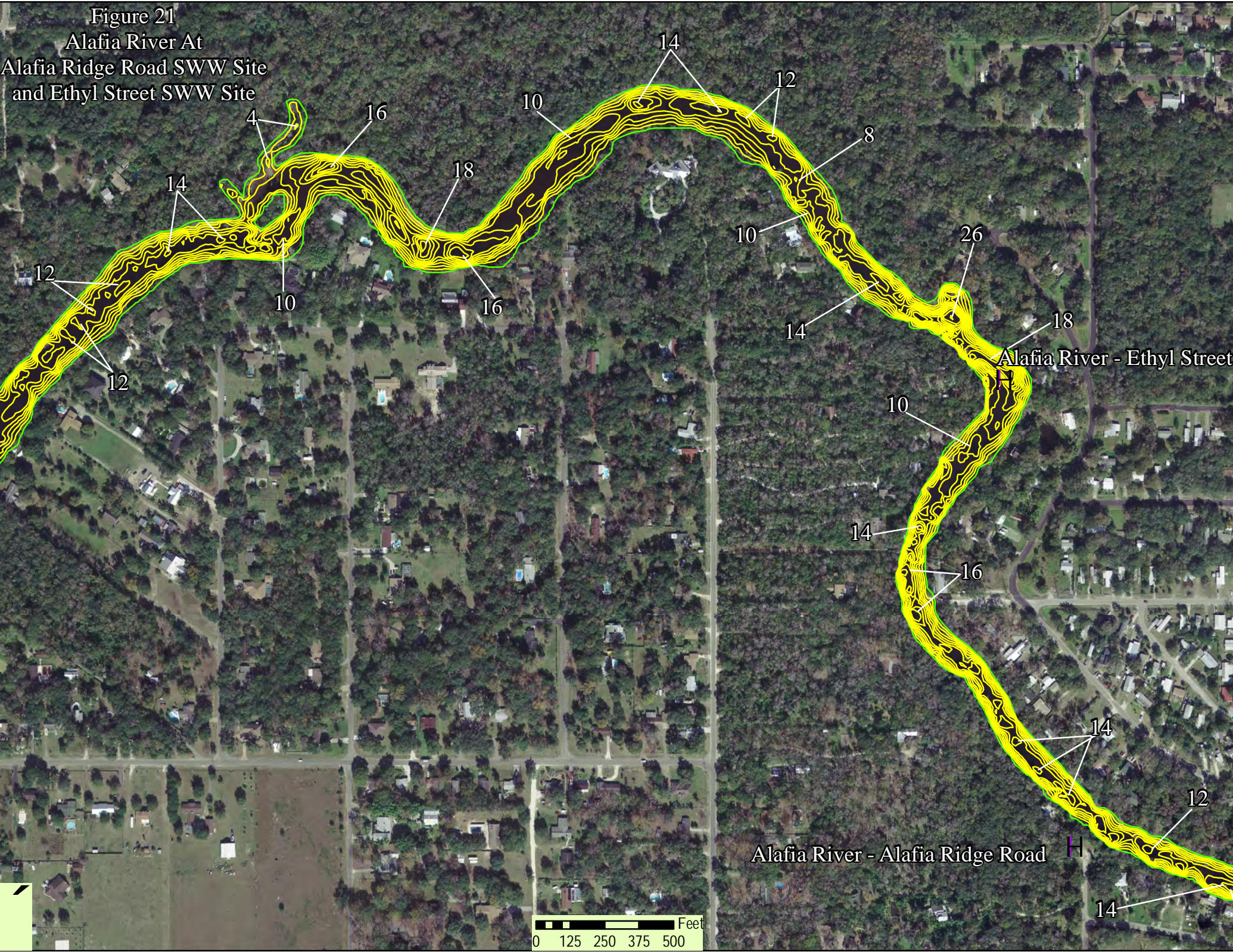




Figure 22  
Alafia River At  
Church Drive SWW Site

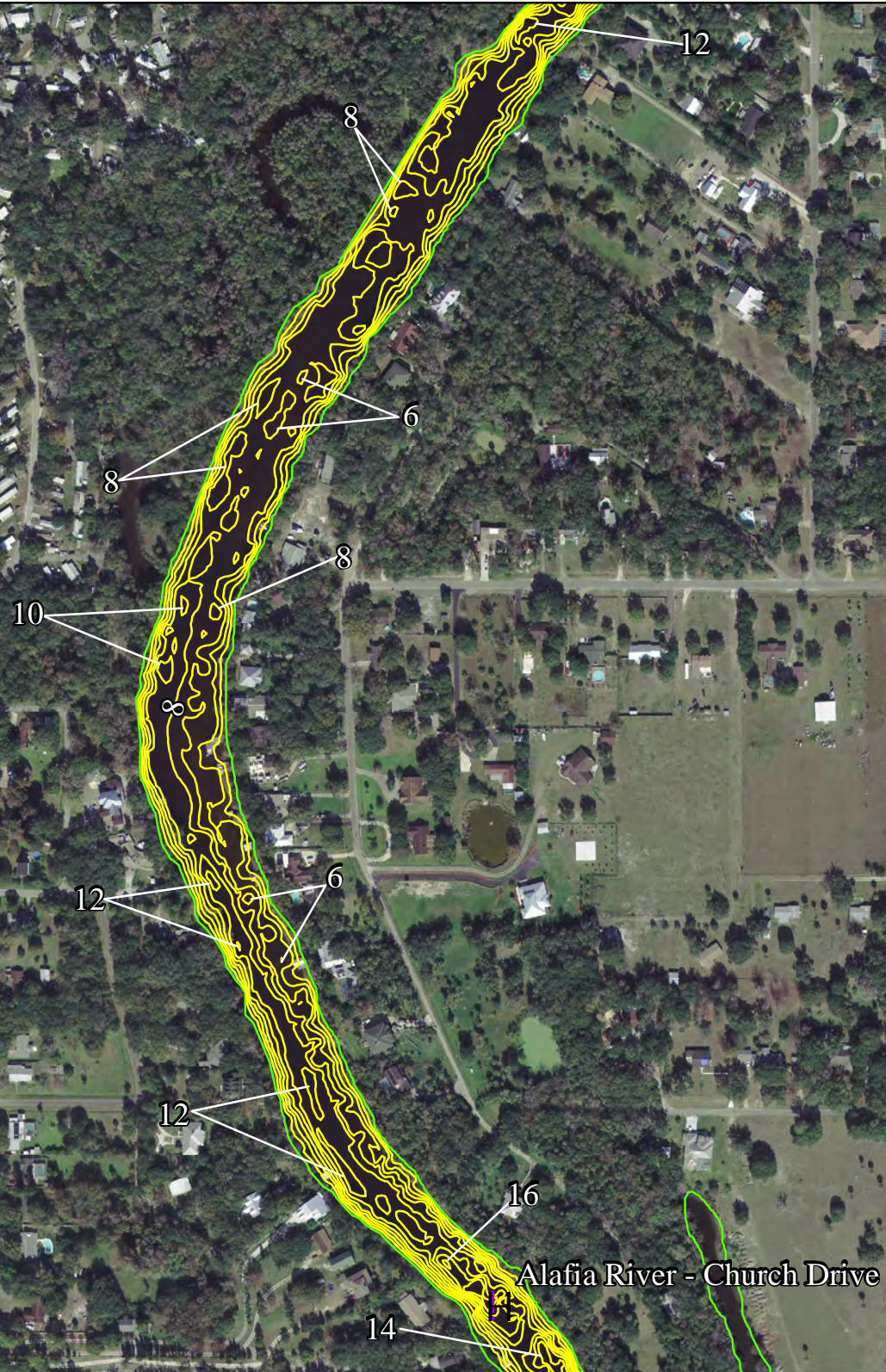




Figure 23  
Alafia River At  
Enders Dock SWW Site

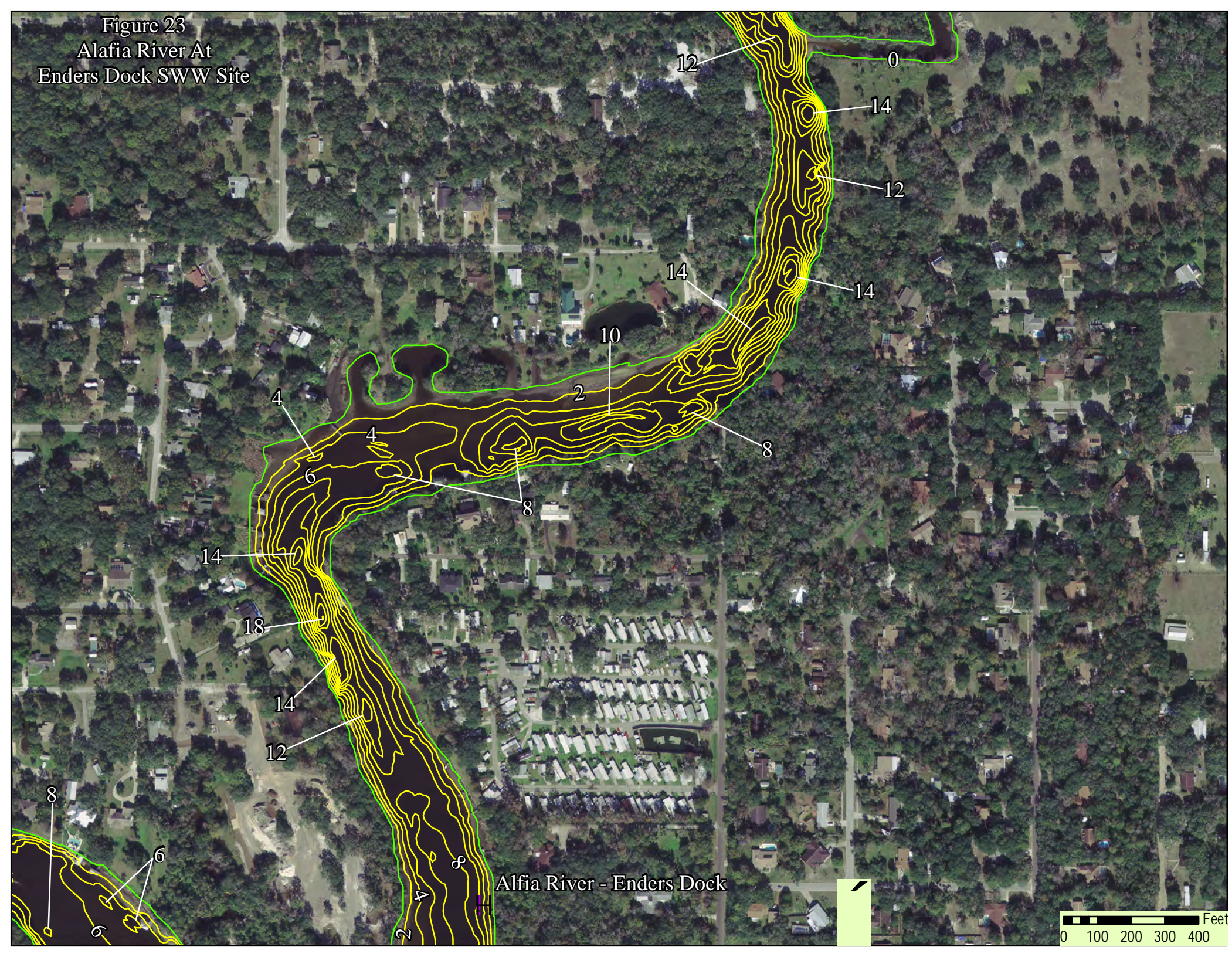




Figure 24  
Alafia River At  
Enders Dock SWW Site  
Rice Creek SWW Site  
and Riverview Park  
and Civic Center SWW Site

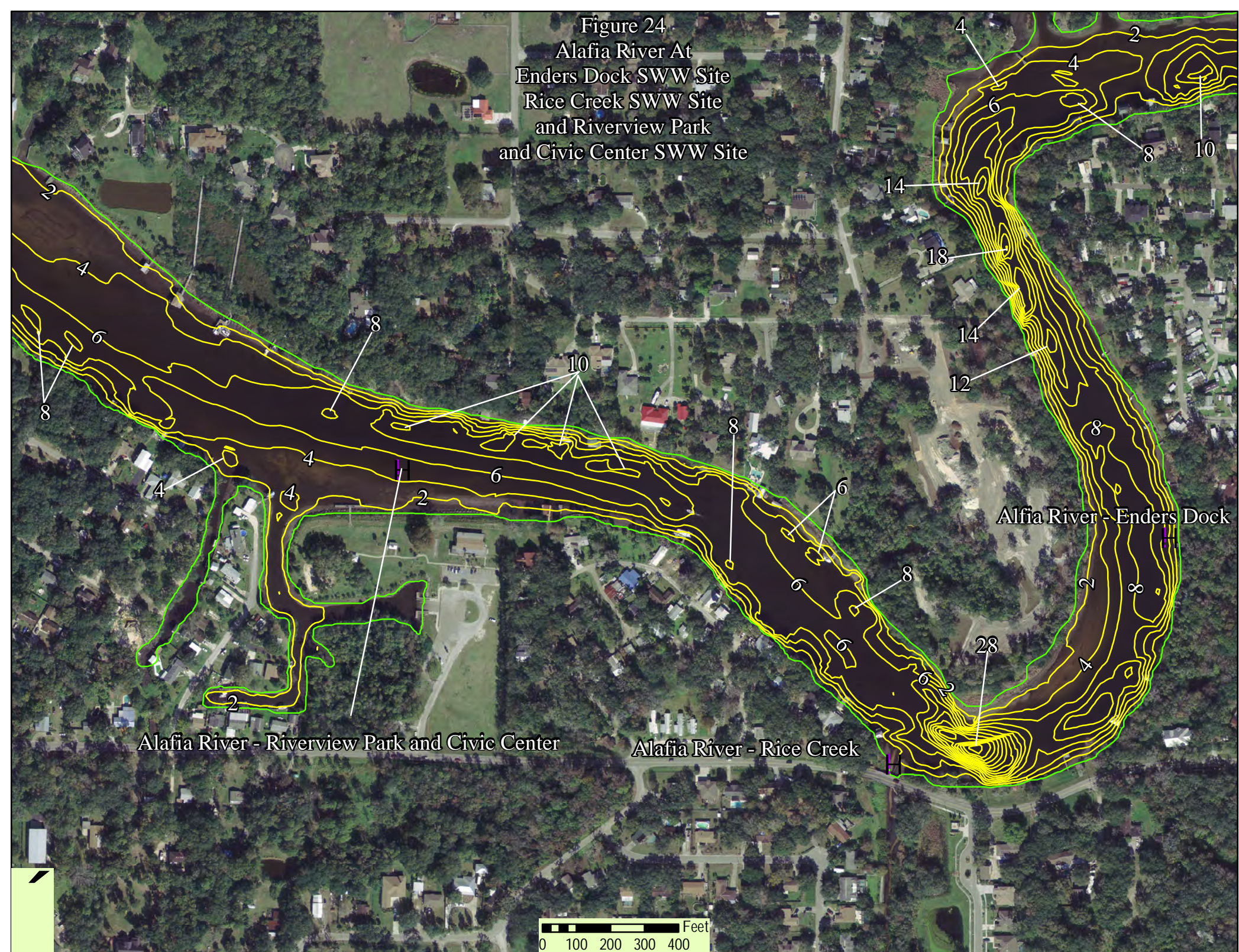




Figure 25  
Alafia River At  
Riverview Park  
and Civic Center SWW Site  
and US Highway 301 SWW Site

