

## Preserve Rules

- Daily hours are sunrise to sunset.
- Park only at the designated location.
- Garbage must be carried out of the Preserve.
- Dogs must be on hand-held leashes.
- Unauthorized vehicles, motorcycles, ATVs, and bicycles are prohibited.
- Swimming, hunting, digging and fires are not allowed.
- Fishing is allowed; a fishing license is required.
- All plants and animals are protected.
- Hillsborough County Code of Ordinances and Laws Part A Chapter 38 is in effect.

## Facilities

- There are no restroom facilities on the Preserve. Facilities are available at Alderman's Ford Park, located just south of the trail head at 100 Alderman's Ford Park Drive.
- ***Use of camping areas allowed only with written permission from the Environmental Lands Management office. Call 813-672-7876 for more information.***

## Trail Length

- 9 miles



## Safety Guidelines

- Bring a compass.
- Wear insect repellent and sunscreen.
- Bring plenty of water.
- Leave an activity plan with family and friends outlining where you will be and when you will return.

## Temporary Closures

The Preserve may be closed on days of prescribed burns, wildfires, flooding or emergencies.

## Entrance

Parking and entrance to the Preserve is located at 9256 County Road 39, Plant City, FL 33567.

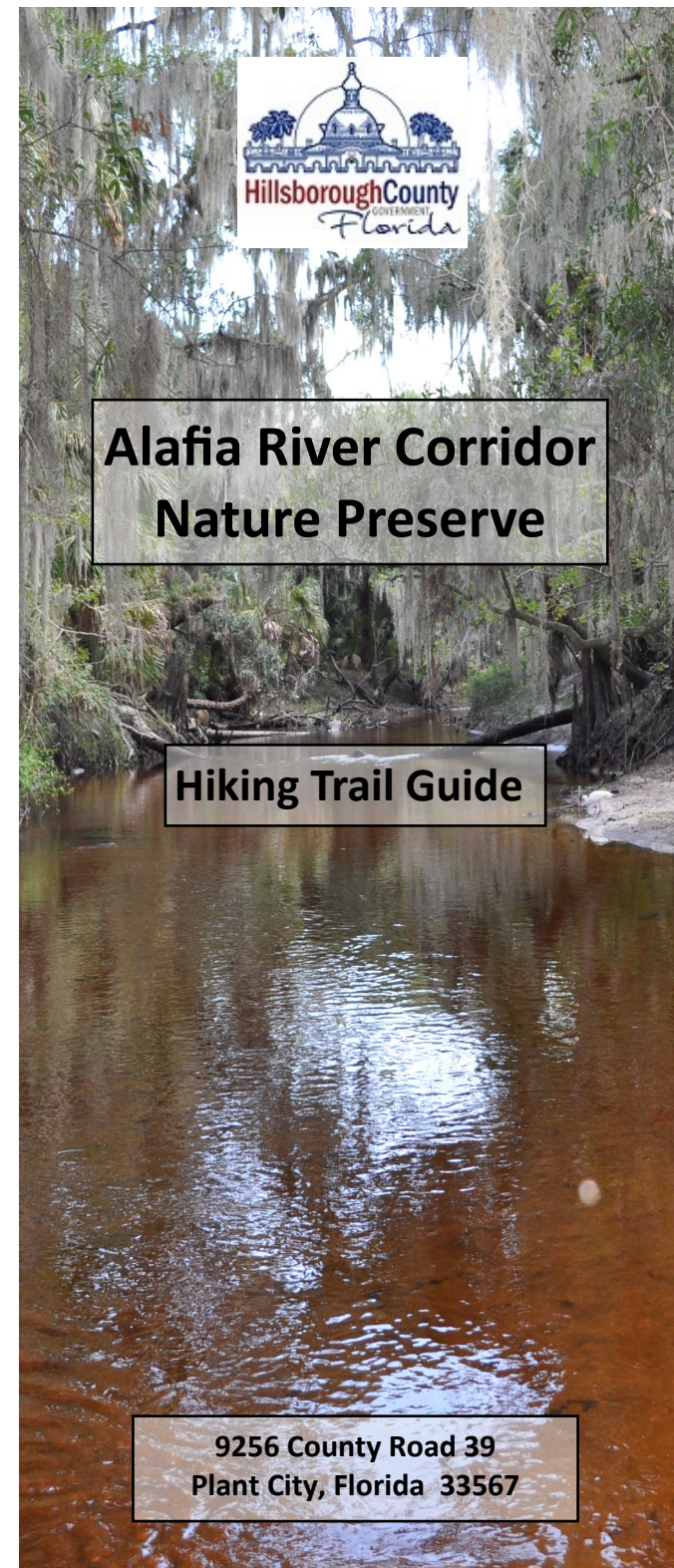
## For Further Information

Interpretive group tours of the site are offered for a nominal fee (minimum 10 people).  
Call 813-672-7876 to make arrangements.

*Cover image: Alafia River*



Conservation and Environmental Lands  
Management Department  
Environmental Lands Management Division  
10940 McMullen Road  
Riverview, FL 33569-6226  
813-672-7876  
Fax: 813-672-7880  
[www.HillsboroughCounty.org/Parks](http://www.HillsboroughCounty.org/Parks)



# Alafia River Corridor Nature Preserve

## Hiking Trail Guide

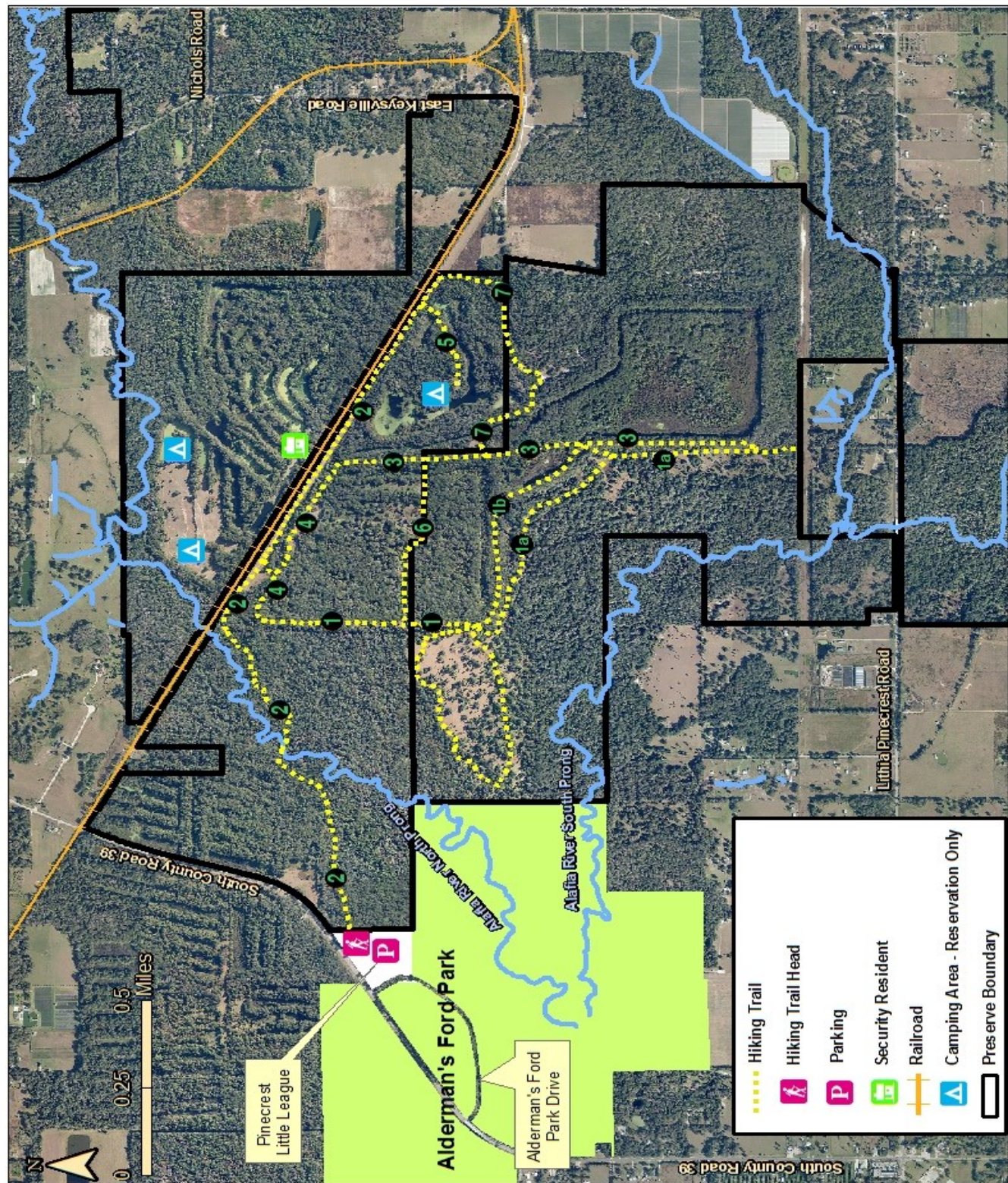
9256 County Road 39  
Plant City, Florida 33567



## Welcome to the Alafia River Corridor Nature Preserve

The 4700-acre Alafia River Corridor Nature Preserve is owned by the Southwest Florida Water Management District and managed by the Hillsborough County Conservation and Environmental Lands Management Department through a lease agreement. The conjoined sites which make up the Preserve were purchased beginning in 1994 with joint funding from Hillsborough County's Jan K. Platt Environmental Lands Acquisition and Protection Program and SWFWMD with Save Our Rivers and Preservation 2000 funds. Natural habitats within the Preserve include: pine flatwoods, dry prairie, hardwood hammock, pine forest, and riverine swamp hardwood forest.

The hiking trail winds through the striking topography of areas mined for phosphate more than sixty years ago. Most of the trail lies within riverine hardwood hammock, various mined lakes, and some semi-improved pasture. For better orientation, the east/west (roughly) legs of the trail are marked with even numbers, and the north/south (roughly) legs are marked with odd numbers. Parking for trail access is located at the north end of the Pinecrest Sports Complex on CR 39. The trailhead is located next to the Nature Preserve sign. Picnic and restroom facilities are located within Alderman's Ford Park, located just south of the trailhead, at 100 Alderman's Ford Park Drive.





## **Welcome to the Alafia River Corridor Nature Preserve**

The Alafia River Corridor Nature Preserve is a 4700-acre refuge owned by the Southwest Florida Water Management District and managed by the Hillsborough County Parks, Recreation and Conservation Department through a lease agreement. The conjoined sites which make up the preserve were purchased beginning in 1994 with joint funding from Hillsborough County's Environmental Lands Acquisition and Protection Program (ELAPP) and SWFWMD with Save Our Rivers and Preservation 2000 funds. Natural habitats within the site include pine flatwoods, dry prairie, hardwood hammock, pine forest, and riverine swamp hardwood forest. The preserve is actively managed with prescribed fire, invasive plant and animal control, and natural habitat restoration.

The horse trail is approximately eight miles in length. Watering points are located at each of the river or stream crossings, although some are seasonally dry. As much of the trail is out in the open, the best time to ride is when temperatures are eighty degrees or less. Facilities available include a trailer entrance and parking

area at Old Welcome Rd. There is also a walk-through gate at Jameson Rd. Horses must be thoroughly broken, properly restrained and prevented from straying unattended. All riders must provide proof of a negative Coggins test.

### **Prescribed Fire**

One of the land management techniques used on the preserves is prescribed burning. This practice is important in maintaining fire-dependent ecosystems such as pine flatwoods. Prescribed fire maintains and in many cases increases species diversity in areas where it is applied. It also helps prevent dangerous wildfires by reducing fuel loads. During prescribed burns, wildfires, or other emergencies, the preserve may be temporarily closed. Call the Conservation Services office for more information.

### **For further information**

Hillsborough County Parks, Recreation and  
Conservation Department  
Conservation Services Office  
10940 McMullen Road  
Riverview, FL 33569-6226  
(813) 672-7876/(813)672-7880 fax  
[www.hillsboroughcounty.org/parks](http://www.hillsboroughcounty.org/parks)

The Hillsborough County Parks, Recreation and Conservation Department is an equal opportunity agency and offers all persons the benefits of participating in each of its programs and competing in all areas of employment regardless of race, religion, sex, national origin, age, handicap, or other nonmerit factors.

---

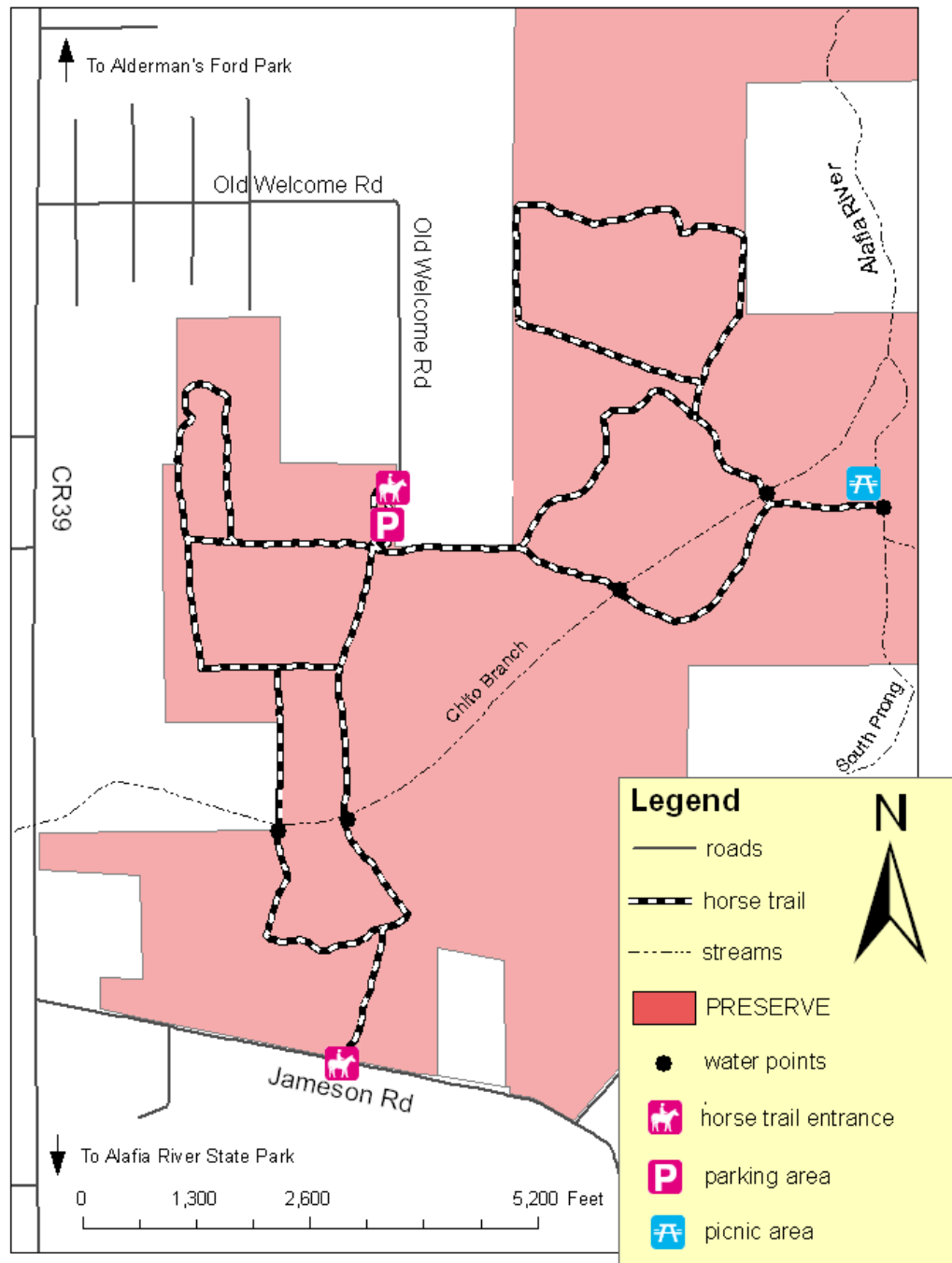
## **Alafia River Corridor Nature Preserve**



### **Horse Trail**



# Alafia River Corridor Horse Trail



## Preserve Rules:

- Hours: sunrise to sunset
- Remove all garbage from the site
- Dogs must be on hand-held leashes
- Unauthorized vehicles and bikes are prohibited
- No swimming
- No firearms or hunting
- No digging, fires, or overnight camping
- **All plants & animals are protected**  
(Hillsborough County Ordinance 08-17)

## Note: Parking area hours - 8:00 am to 5:00 pm

While the preserve itself is open from sunrise to sunset, the parking area at Old Welcome Rd is open 8 am to 5 pm only. There is access through the parking area via walk-through gates to enter or exit the preserve on foot.

**Facilities:** There are no restroom facilities on the preserve. Facilities are available at Alderman's Ford Park or Alafia River State Park.

## Safety Guidelines:

- Bring a compass
- Drink plenty of water
- Wear insect repellent and sunscreen
- Much of the trail is in open pasture, so take care not to let horses overheat; there are 5 watering points at stream crossings.
- Leave a plan with family and friends letting them know where you will be and what time you expect to return.

## DIRECTIONS:

### Parking area address: 931 Old Welcome Rd

From I-75, take Gibsonton/Riverview exit 250. Go east approx 9 miles to Lithia-Pinecrest Rd. Turn right (southeast) and go 3.5 miles to CR 39. Turn right (south), and continue south on CR 39 for 1 mile to Old Welcome Rd. Turn left (east) on Old Welcome and follow the road as it bears south. The preserve entrance is at the end of the road on the right.

### South entrance address: 628 Jameson Rd

## Total trail length = 8 miles

Special thanks to the AmeriCorps volunteers who helped to mark the trail.