

Lake Assessment Report for Lake Alice in Hillsborough County, Florida

Date Assessed: June 24, 2010

Assessed by: David Eilers

Reviewed by: Jim Griffin

INTRODUCTION

This assessment was conducted to update existing physical and ecological data for Lake Alice on the [Hillsborough County & City of Tampa Water Atlas](#). The project is a collaborative effort between the University of South Florida's Center for Community Design and Research and Hillsborough County Stormwater Management Section. The project is funded by Hillsborough County and the Southwest Florida Water Management District's Northwest Hillsborough, Hillsborough River and Alafia River Basin Boards. The project has, as its primary goal, the rapid assessing of up to 150 lakes in Hillsborough County during a five-year period. The product of these investigations will provide the County, lake property owners and the general public a better understanding of the general health of Hillsborough County lakes, in terms of shoreline development, water quality, lake morphology (bottom contour, volume, area, etc.) and the plant biomass and species diversity. These data are intended to assist the County and its citizens to better manage lakes and lake-centered watersheds.



Figure 1. Photo of emergent vegetation along Lake Alice taken 6/24/2010 during the USF-FCCDR Lake Assessment

The first section of the report provides the results of the overall morphological assessment of the lake. Primary data products include: a contour (bathymetric) map of the lake, area, volume and depth statistics, and the water level at the time of assessment. These data are useful for evaluating trends and for developing management actions such as plant management where depth and lake volume are needed.

The second section provides the results of the vegetation assessment conducted on the lake. These results can be used to better understand and manage vegetation in the lake. A list is provided with the different plant species found at various sites around the lake. Potentially invasive, exotic (non-native) species are identified in a plant list and the percent of exotics is presented in a summary table. Watershed values provide a means of reference.

The third section provides the results of the water quality sampling of the lake. Both field data and laboratory data are presented. The trophic state index (TSI)ⁱ is used to develop a general lake health statement, which is calculated for both the water column with vegetation and the water column if vegetation were removed. These data are derived from the water chemistry and vegetative submerged biomass assessments and are useful in understanding the results of certain lake vegetation management practices.

The intent of this assessment is to provide a starting point from which to track changes in the lake, and where previous comprehensive assessment data is available, to track changes in the lake's general health. These data can provide the information needed to determine changes and to monitor trends in physical condition and ecological health of the lake.

Section 1: Lake Morphology

Bathymetric Mapⁱⁱ. Table 1 provides the lake's morphologic parameters in various units. The bottom of the lake was mapped using a Lowrance LCX 28C HD Wide Area Augmentation System (WAAS)ⁱⁱⁱ enabled Global Positioning System (GPS) with fathometer (bottom sounder) to determine the boat's position, and bottom depth in a single measurement. The result is an estimate of the lake's area, mean and maximum depths, and volume and the creation of a bottom contour map (Figure 2). Besides pointing out the deeper fishing holes in the lake, the morphologic data derived from this part of the assessment can be valuable to overall management of the lake vegetation as well as providing flood storage data for flood models.

Table 1. Lake Morphologic Data (Area, Depth and Volume)

Parameter	Feet	Meters	Acres	Acre-Ft	Gallons
Surface Area (sq)	3,792,769	352,360	87.07		
Mean Depth	12	3.70			
Maximum Depth	25	7.60			
Volume (cubic)	44,575,217	1,262,230		1,023.30	333,445,777
Gauge (relative)	39.64	12.08			

ⁱ The trophic state index is used by the Water Atlas to provide the public with an estimate of their lake resource quality. For more information, see end note 1.

ⁱⁱ A bathymetric map is a map that accurately depicts all of the various depths of a water body. An accurate bathymetric map is important for effective herbicide application and can be an important tool when deciding which form of management is most appropriate for a water body. Lake volumes, hydraulic retention time and carrying capacity are important parts of lake management that require the use of a bathymetric map.

ⁱⁱⁱ WAAS is a form of differential GPS (DGPS) where data from 25 ground reference stations located in the United States receive GPS signals from GPS satellites in view and retransmit these data to a master control site and then to geostationary satellites. For more information, see end note 2.

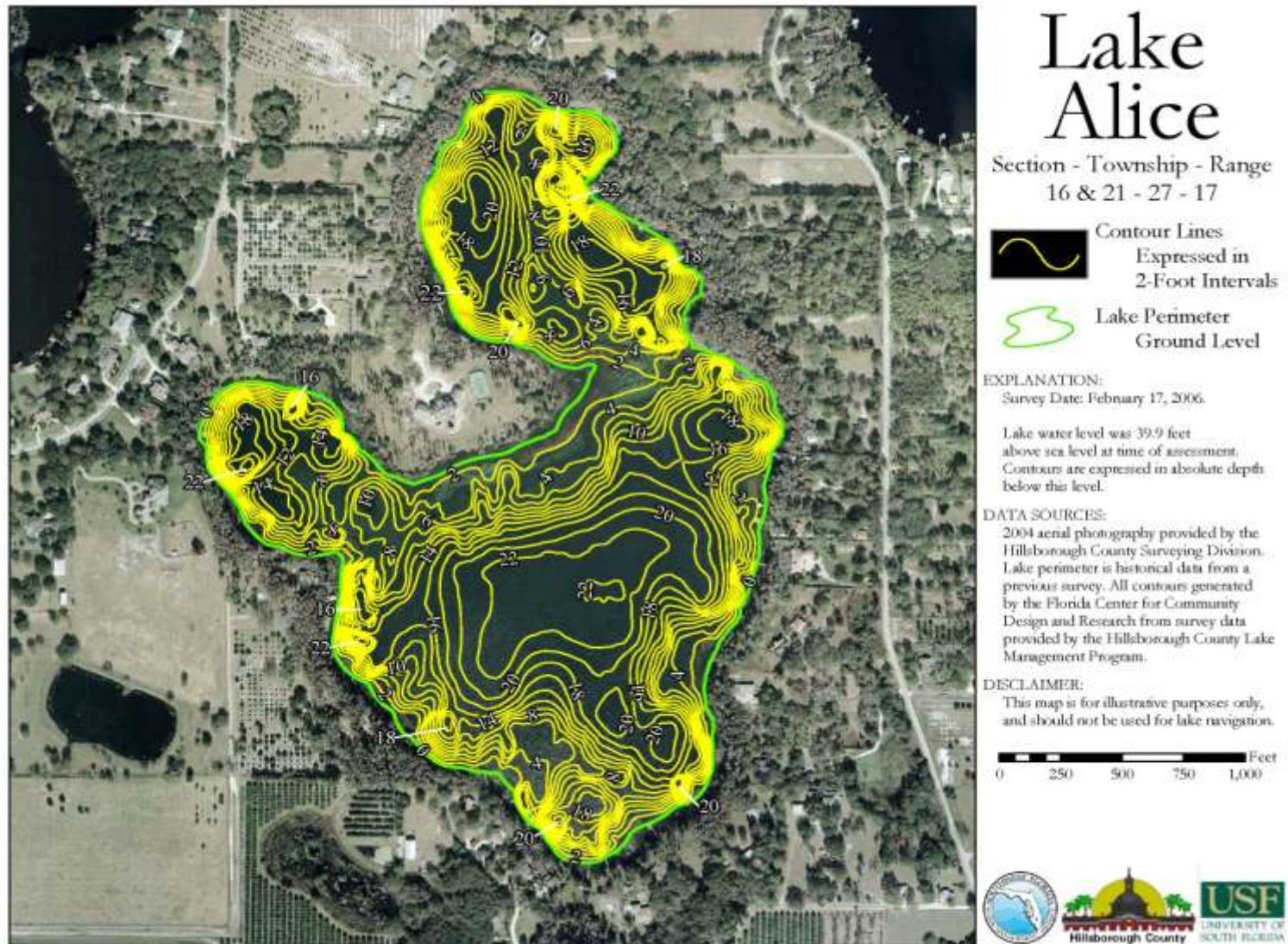


Figure 2. 2006 Lake Alice Bathymetric Map

Section 2: Lake Ecology (Vegetation)

The lake's apparent vegetative cover and shoreline detail are evaluated using the latest lake aerial photograph as shown in and by use of WAAS-enabled GPS. Submerged vegetation is determined from the analysis of bottom returns from the Lowrance 28c HD combined GPS/fathometer described earlier. As depicted in Figure 3, 10 vegetation assessment sites were chosen for intensive sampling based on the *Lake Assessment Protocol* (copy available on request) for a lake of this size. The site positions are set using GPS and then loaded into a GIS mapping program (ArcGIS) for display. Each site is sampled in the three primary vegetative zones (emergent, submerged and floating)^{iv}. The latest high resolution aerial photos are used to provide shore details (docks, structures, vegetation zones) and to calculate the extent of surface vegetation coverage. The primary indices of submerged vegetation cover and biomass for the lake, percent area coverage (PAC) and percent volume infestation (PVI), are determined by transiting the lake by boat and employing a fathometer to collect "hard and soft return" data. These data are later analyzed for presence and absence of vegetation and to determine the height of vegetation if present. The PAC is determined from the presence and absence analysis of 100 sites in the lake and the PVI is determined by measuring the difference between hard returns (lake bottom) and soft returns (top of vegetation) for sites (within the 100 analyzed sites) where plants are determined present.

Beginning with the 2010 Lake Assessments, the Water Atlas Lake Assessment Team has added the Florida Department of Environmental Protection (FDEP) Lake Vegetation Index (LVI)^v method to the methods used to evaluate a lake. The LVI method was designed by DEP to be a rapid assessment of ecological condition, by determining how closely a lake's flora resembles that expected from a minimally disturbed condition.

The data collected during the site vegetation sampling include vegetation type, exotic vegetation, predominant plant species and submerged vegetation biomass. The total number of species from all sites is used to approximate the total diversity of aquatic plants and the percent of invasive-exotic plants on the lake (Table 2). The Watershed value in Table 2 only includes lakes sampled during the lake assessment project begun in May of 2006. These data will change as additional lakes are sampled. Table 3 through Table 5 detail the results from the 2010 aquatic plant assessment for the lake. These data are determined from the 10 sites used for intensive vegetation surveys. The tables are divided into Floating Leaf, Emergent and Submerged plants and contain the plant code, species, common name and presence (indicated by a 1) or absence (indicated by a blank space) of species and the calculated percent occurrence (number sites species is found/number of sites) and type of plant (Native, Non-Native, Invasive, Pest). In the "Type" category, the codes N and E0 denote species native to Florida. The code E1 denotes Category I invasive species, as defined by the [Florida Exotic Pest Plant Council](#) (FLEPPC); these are species "that are altering native plant communities by displacing native species, changing community structures or ecological functions, or hybridizing with natives." The code E2 denotes Category II invasive species, as defined by FLEPPC; these species "have increased in abundance or frequency but have not yet altered Florida plant communities to the extent shown by Category I species." Use of the term invasive indicates the plant is commonly considered invasive in this region of Florida. The term "pest" indicates a plant (native or non-native) that has a greater than 55% occurrence in the lake and is also considered a problem plant for this region of Florida, or is a non-native invasive that is or has the potential to be a problem plant in the lake and has at least 40% occurrence. These two terms are somewhat subjective; however, they are provided to give lake property owners some guidance in the management of plants on their property. Please remember that to remove or control plants in a wetland (lake shoreline) in Hillsborough County the property owner must secure an [Application To Perform Miscellaneous Activities In Wetlands](#) permit from the [Environmental Protection Commission of Hillsborough County](#) and for management of in-lake vegetation outside the wetland fringe (for lakes with an

^{iv} See end note 3.

^v See end note 4.

area greater than ten acres), the property owner must secure a [Florida Department of Environmental Protection Aquatic Plant Removal Permit](#).

Table 2. Total Diversity, Percent Exotics, and Number of Pest Plant Species

Parameter	Lake	Watershed
Number of Vegetation Assessment Sites	10	216
Total Plant Diversity (# of Taxa)	48	177
% Non-Native Plants	17	17
Total Pest Plant Species	2	18

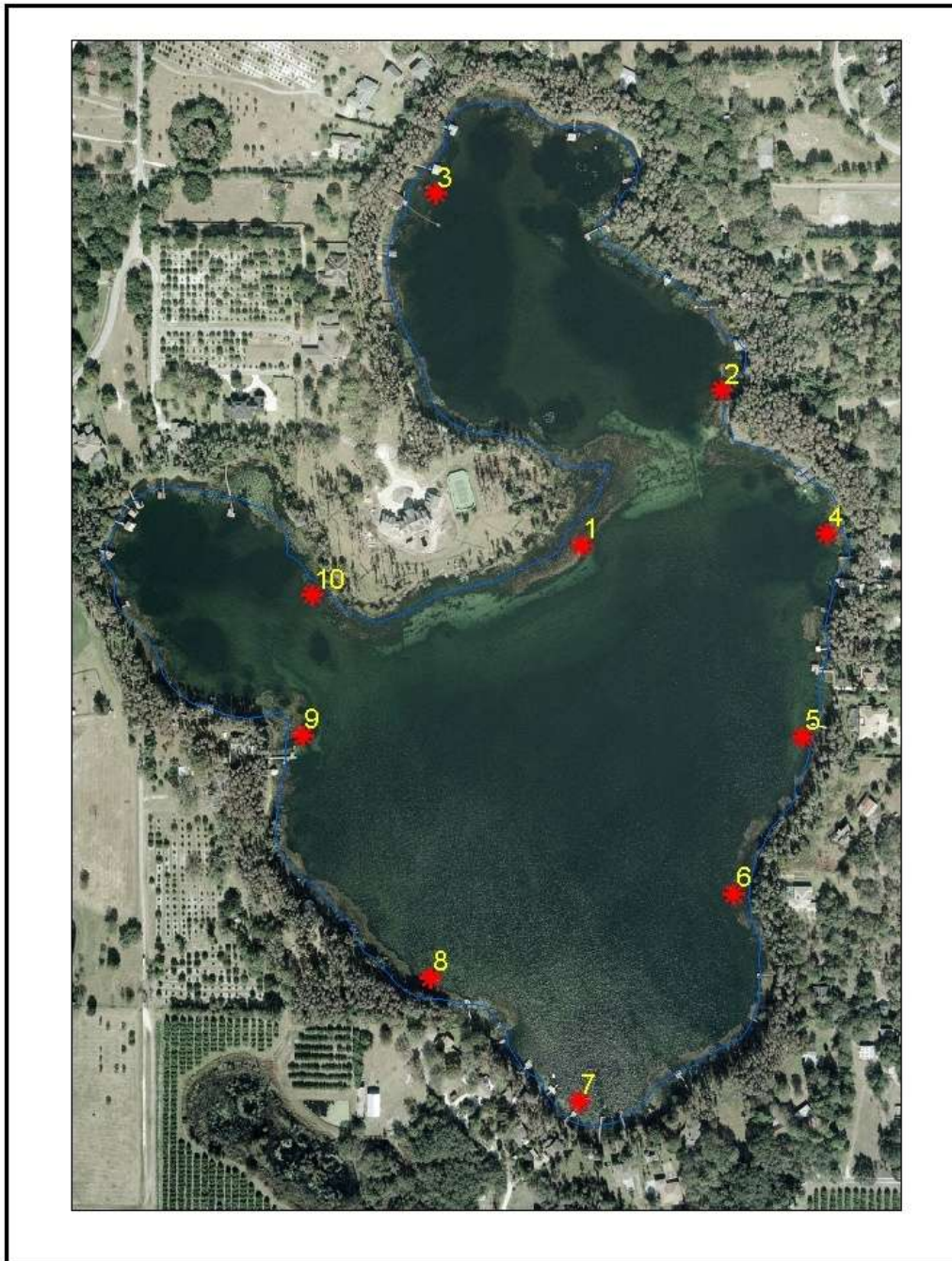


Figure 3. Vegetation assessment site map for Lake Alice

Table 3. List of Floating Leaf Zone Aquatic Plants Found

Plant Species Code	Scientific Name	Common Name	Percent Occurrence	Type
NOA	<i>Nymphaea odorata</i>	American White Water Lily, Fragrant Water Lily	70%	N, E0



Figure 4. Photo of near-shore vegetation on Lake Alice taken 6/24/2010 during the USF-FCCDR Lake Assessment.

Table 4. List of Emergent Zone Aquatic Plants Found

Plant Species Code	Scientific Name	Common Name	Percent Occurrence	Type
TAS	<i>Taxodium acendens</i>	Pond Cypress	100%	N, E0
PRS	<i>Panicum repens</i>	Torpedo Grass	100%	E1, P
HYE	<i>Hydrocotyl umbellata</i>	Manyflower Marshpennywort, Water Pennywort	90%	N, E0
FSR	<i>Fuirena scirpoidea</i>	Southern Umbrellasedge	80%	N, E0
PHN	<i>Panicum hemitomom</i>	Maidencane	70%	N, E0
VRA	<i>Vitis rotundifolia</i>	Muscandine Grape	60%	N, E0
BLS	<i>Blechnum serrulatum</i>	Swamp fern, Toothed Midsorus Fern	60%	N
PCA	<i>Pontederia cordata</i>	Pickerel Weed	50%	N, E0
LPA	<i>Ludwigia peruviana</i>	Peruvian Primrosewillow	40%	E0, P
JUM	<i>Juncus marginatus</i>	Shore Rush, Grassleaf Rush	40%	N, E0
CCA	<i>Cinnamomum camphora</i>	Camphor-tree	30%	N, E1
CPT	<i>Cyperus polystachyos</i>	Flat Sedge	30%	N, E0
CSS	<i>Cyperus surinamensis</i>	Sedge	30%	N, E0
CYO	<i>Cyperus odoratus</i>	Fragrant Flatsedge	30%	N, E0
WAX	<i>Myrica cerifera</i>	Wax Myrtle	30%	N, E0
LRS	<i>Ludwigia repens</i>	Creeping Primrosewillow, Red Ludwigia	30%	N, E0
MEL	<i>Melaleuca quinquenervia</i>	Punk Tree, Melaleuca	30%	E1
MSS	<i>Mikania scandens</i>	Climbing Hempvine	20%	N, E0
QLA	<i>Quercus laurifolia</i>	Laurel Oak; Diamond Oak	20%	N, E0
SAM	<i>Sambucus canadensis</i>	Elderberry	20%	N, E0
STS	<i>Schinus terebinthifolius</i>	Brazilian Pepper	20%	E1
TDM	<i>Taxodium distichum</i>	Bald Cypress	20%	N, E0
TYP	<i>Typha spp.</i>	Cattails	20%	N, E0
DBA	<i>Dioscorea bulbifera</i>	Air Potato	20%	E1
CEA	<i>Colocasia esculenta</i>	Wild Taro	20%	E1
HYP	<i>Hypericum spp.</i>	Hypericum spp., St. John's Wort	20%	
JSS	<i>Juncus scirpoides</i>	Needlepod Rush	20%	N, E0
LOS	<i>Ludwigia octovalvis</i>	Mexican Primrosewillow, Long-stalked Ludwigia	10%	N, E0
GLS	<i>Gordonia lasianthus</i>	Loblolly Bay	10%	N, E0
ACE	<i>Acer rubrum</i>	Southern Red Maple	10%	N, E0
APS	<i>Alternanthera philoxeroides</i>	Alligator Weed	10%	E2
BID	<i>Bidens spp.</i>	Bur Marigold	10%	N, E0
CJE	<i>Cladium jamaicense</i>	Jamaica Swamp Saw Grass	10%	N, E0
CNI	<i>Cirsium nuttallii</i>	Nuttall's Thistle	10%	N
COM	<i>Commelina spp.</i>	Dayflower	10%	N, E0

Plant Species Code	Scientific Name	Common Name	Percent Occurrence	Type
ULA	<i>Urena lobata</i>	Caesar's-weed	10%	N, E2
XYR	<i>Xyris spp.</i>	Yellow-eyed Grass	10%	N, E0
SAL	<i>Salix spp.</i>	Willow	10%	N, E0
PQA	<i>Parthenocissus quinquefolia</i>	Virginia Creeper, Woodbine	10%	N, E0
MVA	<i>Magnolia virginiana</i>	Sweetbay Magnolia	10%	N, E0
MAH	<i>Melia azedarach</i>	Chinaberrytree	10%	E2



Figure 5. Photo of emergent vegetation along Lake Alice taken 6/24/2010 during the USF-FCCDR Lake Assessment

Table 5. List of Submerged Zone Aquatic Plants Found.

Plant Species Code	Scientific Name	Common Name	Percent Occurrence	Type
MHM	<i>Myriophyllum heterophyllum</i>	Two Leaf Watermilfoil	100%	N, E0
UTA	<i>Utricularia spp.</i>	Bladderwort	70%	N, E0
EBI	<i>Eleocharis baldwinii</i>	Baldwin's Spikerush, Roadgrass	60%	N, E0
BCA	<i>Bacopa caroliniana</i>	Lemon Bacopa	20%	N, E0
MGM	<i>Micranthemum glomeratum</i>	Manatee Mudflower, Baby's Tears	10%	N, E0
NGS	<i>Najas guadelupensis</i>	Southern Naiad	10%	N, E0



Figure 6. Photo of submerged vegetation in Lake Alice taken 6/24/2010 during USF-FCCDR Lake Assessment. Species pictured are Myriophyllum spp. and Utricularia spp.

Table 6. List of All Plants and Sample Sites

Plant Common Name	Found at Sample Sites	Percent Occurrence	Growth Type
Pond Cypress	1,2,3,4,5,6,7,8,9,10	100	Emergent
Torpedo Grass	1,2,3,4,5,6,7,8,9,10	100	Emergent
TWOLEAF WATERMILFOIL	1,2,3,4,5,6,7,8,9,10	100	Submersed
Manyflower Marshpennywort, Water Pennywort	1,2,4,5,6,7,8,9,10	90	Emergent
Southern Umbrella sedge	1,2,3,4,6,8,9,10	80	Emergent
American White Water Lily, Fragrant Water Lily	1,2,3,6,8,9,10	70	Floating
Bladderwort	1,2,3,4,8,9,10	70	Submersed
Maidencane	1,2,3,6,8,9,10	70	Emergent
Baldwin's Spikerush, Roadgrass	1,4,5,7,9,10	60	Submersed
Muscandine Grape	2,3,4,5,6,8	60	Emergent
Swamp fern, Toothed Midsorus Fern	1,2,3,6,8,9	60	Emergent
Pickrel Weed	1,2,3,9,10	50	Emergent
Peruvian Primrosewillow	1,2,8,10	40	Emergent
Shore Rush, Grassleaf Rush	2,3,4,10	40	Emergent
Camphor-tree	3,4,6	30	Emergent
Creeping Primrosewillow, Red Ludwigia	1,2,4	30	Emergent
Flat Sedge	1,2,4	30	Emergent
Fragrant Flatsedge	1,5,10	30	Emergent
Punk Tree, Melaleuca	2,6,8	30	Emergent
Sedge	3,4,7	30	Emergent
Wax Myrtle	5,7,9	30	Emergent
Air Potato	1,8	20	Emergent
Bald Cypress	3,10	20	Emergent
Brazilian Pepper	4,5	20	Emergent
Cattails	9,10	20	Emergent
Climbing Hempvine	8,9	20	Emergent
Elderberry	6,8	20	Emergent
Hypericum spp., St. John's Wort	2,8	20	Emergent
Laurel Oak; Diamond Oak	8,9	20	Emergent
Lemon Bacopa	2,6	20	Submersed
Needlepod Rush	2,4	20	Emergent
Wild Taro	2,3	20	Emergent

Plant Common Name	Found at Sample Sites	Percent Occurrence	Growth Type
Alligator Weed	10	10	Emergent
Bur Marigold	4	10	Emergent
Caesar's-weed	2	10	Emergent
Chinaberrytree	5	10	Emergent
Dayflower	4	10	Emergent
Jamaica Swamp Saw Grass	1	10	Emergent
Loblolly Bay	10	10	Emergent
Manatee Mudflower, Baby's Tears	4	10	Submersed
Mexican Primrosewillow, Long-stalked Ludwigia	3	10	Emergent
Nuttall's Thistle	7	10	Emergent
Southern Naiad	4	10	Submersed
Southern Red Maple	10	10	Emergent
Sweetbay Magnolia	8	10	Emergent
Virginia Creeper, Woodbine	3	10	Emergent
Willow	9	10	Emergent
Yellow-eyed Grass	4	10	Emergent

Section 3: Long-term Ambient Water Chemistry

A critical element in any lake assessment is the long-term water chemistry data set. These data are obtained from several data sources that are available to the Water Atlas and are managed in the Water Atlas Data Download and graphically presented on the water quality page for lakes in Hillsborough County. The Lake Alice Water Quality Page can be viewed at <http://www.hillsborough.wateratlas.usf.edu/lake/waterquality.asp?wbodyid=5075&wbodyatlas=lake>.

A primary source of lake water chemistry in Hillsborough County is the [Florida LAKEWATCH](#) volunteer lake monitor and the Florida LAKEWATCH laboratory at the University of Florida. Lake Alice does not have an active LAKEWATCH volunteer presently. The last LAKEWATCH volunteer water chemistry data was collected on March 29, 2004, so only limited trend analysis is possible. Other source data are used as available; however these data can only indicate conditions at time of sampling.

These data are displayed and analyzed on the Water Atlas as shown in Figure 7, Figure 8, and Figure 9 for Lake Alice. The figures are graphs of: (1) the overall trophic state index (TSI)ⁱ, which is a method commonly used to characterize the productivity of a lake, and may be thought of as a lake's ability to support plant growth and a healthy food source for aquatic life; (2) the chlorophyll a concentration, which indicates the lake's algal concentration, and (3) the lake's Secchi Disk depth which is a measure of water visibility and depth of light penetration. These data are used to evaluate a lake's ecological health and to provide a method of ranking lakes and are indicators used by the US Environmental Protection Agency (USEPA) and the Florida Department of Environmental Protection (FDEP) to determine a lake's level of impairment. The chlorophyll a and Secchi Disk depth graphs include benchmarks which indicate the median values for the various parameters for a large number of Lakes in Florida expressed as percentiles.

Based on best available data, Lake Alice has a color value determined as a mean platinum cobalt unit (pcu) value of 7.5 and is considered a Clear lake (has a mean color in pcu equal to or below 40). The FDEP and USEPA may classify a lake as impaired if the lake is a dark lake (has a mean color in pcu greater than 40) and has a TSI greater than 60, or is a clear lake and has a TSI greater than 40. Lake Alice has a TSI of 17.64 and does not meet the FDEP Impaired Waters Rule (IWR) criteria for impaired lakes. See also Table 7. The data in Table 7 is based on both FDEP and FCCDR sample events accomplished in the same time frame (August 2010). When reviewing the laboratory results from the FCCDR samples, it was determined that the results were questionable in that phosphorus concentrations were significantly higher than what could be supported by other sample data taken from this lake. Additional sampling should be accomplished to determine the source of error if one exists.



Figure 7. Recent Trophic State Index (TSI) graph for Lake Alice^{vi}

^{vi} Graph source: Hillsborough County Water Atlas. For an explanation of the Good, Fair and Poor benchmarks, please see the notes at the end of this report. For the latest data go to: http://www.hillsborough.wateratlas.usf.edu/graphs20/graph_it.aspx?wbodyid=5075&data=TSI&datatype=WQ&waterbodyatlas=lake&ny=10&bench=1

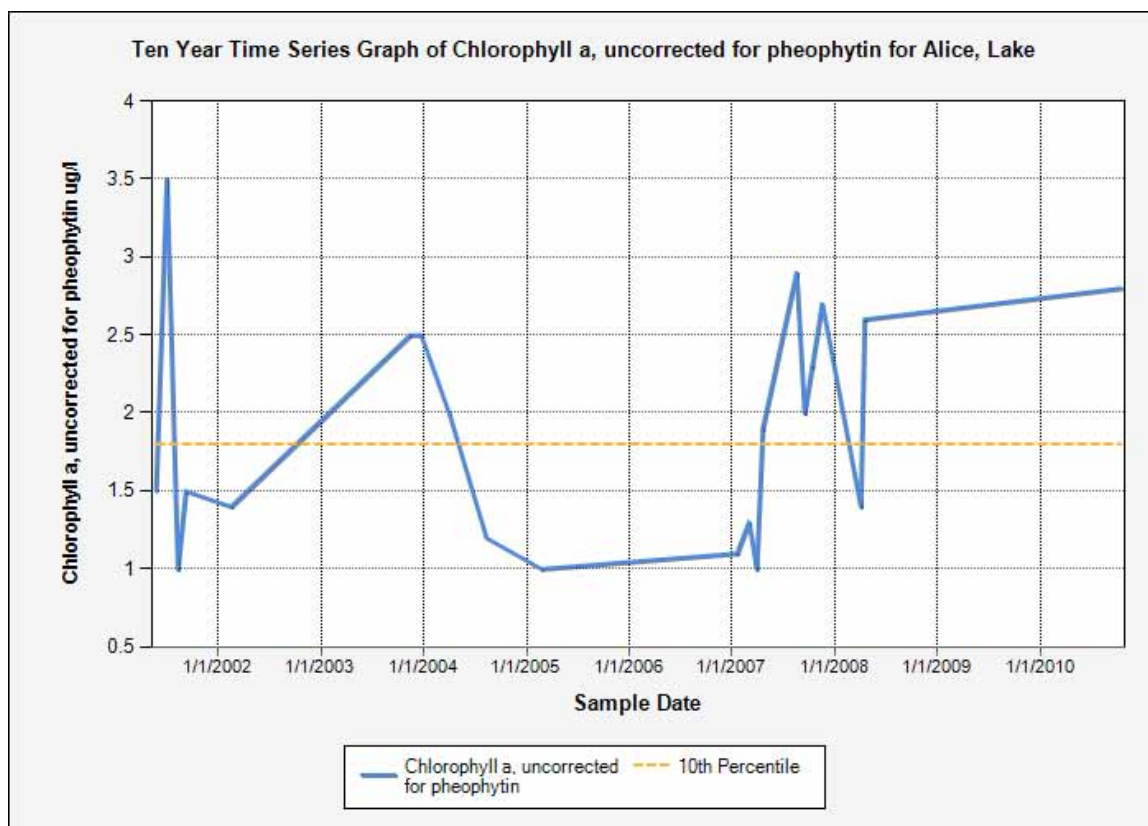


Figure 8. Recent Chlorophyll a graph for Lake Alice^{vii}

^{vii} Graph Source: Hillsborough County Water Atlas. For the latest data go to http://www.hillsborough.wateratlas.usf.edu/graphs20/graph_it.aspx?wbodyid=5075&data=Chla_ugl&datatype=WQ&waterbodyatlas=lake&ny=10&bench=1

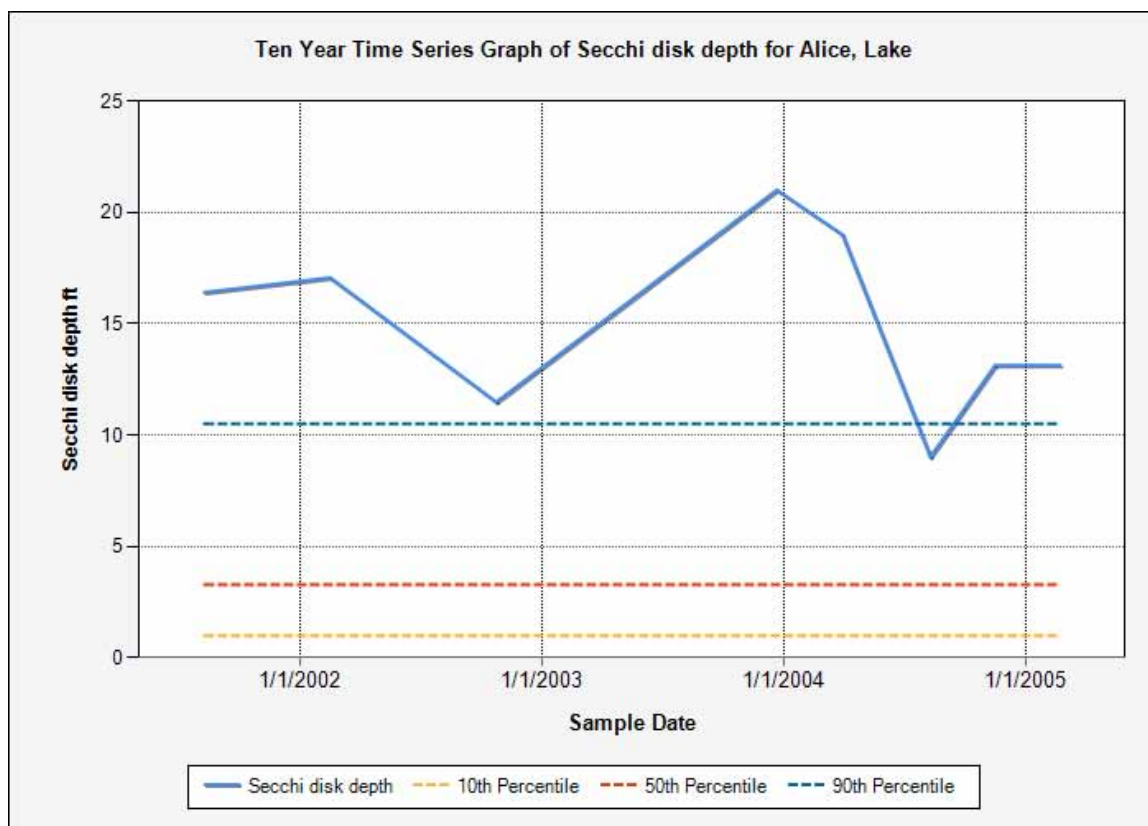


Figure 9. Recent Secchi Disk graph for Lake Alice^{viii}

As part of the lake assessment the physical water quality and chemical water chemistry of a lake are measured. These data only indicate a snapshot of the lake's water quality; however they are useful when compared to the trend data available from LAKEWATCH or other sources. Table 7 contains the summary water quality data and index values and adjusted values calculated from these data. The total phosphorus (TP), total nitrogen (TN) and chlorophyll a water chemistry sample data are the results of chemical analysis of samples taken during the assessment and analyzed by the Hillsborough County Environmental Protection Commission laboratory.

The growth of plants (planktonic algae, macrophytic algae and rooted plants) is directly dependent on the available nutrients within the water column of a lake and to some extent the nutrients which are held in the sediment and the vegetation biomass of a lake. Additionally, algae and other plant growth are limited by the nutrient in lowest concentration relative to that needed by a plant. Plant biomass contains less phosphorus by weight than nitrogen so phosphorus is many times the limiting nutrient. When both nutrients are present at a concentration in the lake so that either or both may restrict plant growth, the limiting factor is called "balanced". The ratio of total nitrogen to total phosphorous, the "N to P" ratio (N/P), is used to determine the limiting factor. If N/P is greater than or equal to 30, the lake is considered phosphorus limited, when this ratio is less than or equal to 10, the lake is considered nitrogen limited and if between 10 and 30 it is considered balanced.

^{viii} Graph Source: Hillsborough County Water Atlas. For the latest data go to http://www.hillsborough.wateratlas.usf.edu/graphs20/graph_it.aspx?wbodyid=5075&data=secchi_ft&datatype=WQ&waterbodyatlas=lake&ny=10&bench=1

Table 7. Water Quality Parameters (Laboratory) for Lake Alice

Parameter	Value
Lake Area (Acres)	87.07
Lake Area (m2)	352,360.00
Lake Volume (m3)	1,262,230.00
Number of Vegetation Sites	10
Average Station SAV Weight	0.62
Wet Weight of Vegetation (g)	181,909,263.60
Dry Weight of Vegetation (g)	14,552,741.09
Total Phosphorus (ug/L)	6 (FDEP)
Total Nitrogen (ug/L)	328 (FDEP)
Chlorophyll a (ug/L)	1 (FDEP)
TN/TP	54.67
Limiting Nutrient	Phosphorus
Chlorophyll TSI	16.8
Phosphorus TSI	18.49
Nitrogen TSI	33.93
TSI	17.64
Color (PCU)	7.5
Secchi disk depth (ft)	22.30
Impaired TSI for Lake	40
Lake Status (Water Column)	Not Impaired

The color of a lake is also important to the growth of algae. Dark, tannic lakes tend to suppress algal growth and can tolerate a higher amount of nutrient in their water column; while clear lakes tend to support higher algal growth with the same amount of nutrients. The color of a lake, which is measured in a unit called the “cobalt platinum unit (PCU)” because of the standard used to determine color, is important because it is used by the State of Florida to determine lake impairment as explained earlier. A new rule which is being developed by USEPA and FDEP, will use alkalinity in addition to color to determine a second set of “clear-alkaline lakes” which will be allowed a higher TSI than a “clear-acid” lake. This is because alkaline lakes have been found to exhibit higher nutrient and algal concentrations than acid lakes. Additionally, lakes connected to a river or other “flow through” system tend to support lower algal growth for the same amount of nutrient concentration. All these factors are important to the understanding of your lake’s overall condition. Table 7 includes many of the factors that are typically used to determine the actual state of plant growth in your lake. These data should be understood and reviewed when establishing a management plan for a lake; however, as stated above other factors must be considered when developing such a plan. Please contact the [Water Atlas Program](#) if you have questions about this part or any other part of this report.

Lake Alice is in the “Clear” category of lakes based on its mean color value of 7.5 pcu. This means that to not be considered impaired, the TSI must be equal to or less than 40. The TSI for Lake Alice is 17.64 so the lake would not be considered impaired by the FDEP criteria based on this single data set. Figure 7 also indicates a TSI that is consistently below the 40 threshold; however a general trend of higher nutrients than found on the day of the FDEP sampling event.

Table 8 provides data derived from the vegetation assessment which is used to determine an adjusted TSI. This is accomplished by calculating the amount of phosphorus and nitrogen that could be released by existing submerged vegetation (Adjusted Nutrient) if this vegetation were treated with an herbicide or managed by the addition of Triploid Grass Carp (*Ctenopharyngodon idella*). The table also shows the result of a model that calculates the potential algae, as chlorophyll a (Adjusted Chlorophyll), which could develop due to the additional nutrients held within the plant biomass. While it would not be expected that all the vegetation would be turned into available phosphorus by these management methods, the data is useful when planning various management activities. Approximately 83.00 % of the lake has submerged vegetation

present (PAC) and this vegetation represents about 11.08 % of the available lake volume (PVI). Please see additional parameters for adjusted values where appropriate in Table 8. The vegetation holds enough nutrients to add about 16.26 µg/L of phosphorus and 65.26 µg/L of nitrogen to the water column and increase the algal growth potential within the lake.

Lake Alice is phosphorus-limited; i.e., an increase in phosphorus could change the TSI and increase the potential for algal growth.

Table 8. Field parameters and calculations used to determine nutrients held in Submerged Aquatic Vegetation (SAV) biomass.

Parameter	Value
% Area Covered (PAC)	83.00%
PVI	11.10%
Total Phosphorus - Adjusted (ug/L)	16.26
Total Phosphorus - Combined (ug/L)	22.26
Total Nitrogen - Adjusted (ug/L)	219.06
Total Nitrogen - Combined (ug/L)	547.06
Chlorophyll - Adjusted from Total Nutrients (ug/L)	5.69
Chlorophyll - Combined (ug/L)	6.69
Adjusted Chlorophyll TSI	44
Adjusted Phosphorus TSI	49
Adjusted Nitrogen TSI	44
Adjusted TSI (for N, P, and CHLA)	45
Impaired TSI for Lake	40

Lake Alice has 83% of its submerged area covered in aquatic vegetation which accounts for 10.1 % of the lake volume. This submerged vegetation is estimated to hold 16 ug/L of phosphorus and 219 ug/L nitrogen and can support enough algal growth to produce an additional 5.69 ug/L Chlorophyll a. The added nutrients which are contained in submerged vegetation, if released, would more than double the lake's TSI and move the lake to an impaired status. It is important when considering vegetation management, to select methods that do not result in rapid release of plant nutrients to the water column. Such methods as vegetation harvesting should be considered instead of the use of herbicides or biological controls such as Grass carp.

Table 9 contains the field data taken in the center of the lake using a multi-probe (we use either a YSI 6000 or a Eureka Manta) which has the ability to directly measure the temperature, pH, dissolved oxygen (DO), percent DO (calculated from DO, temperature and conductivity). These data are listed for three levels in the lake and twice for the surface measurement. The duplicate surface measurement is taken as a quality assurance check on measured data.

Table 9. Water Chemistry Data Based on Manta Water Chemistry Probe for Lake Alice

Sample Location	Sample Depth (m)	Time	Temp (deg C)	Conductivity (mS/cm3)	Dissolved Oxygen (%)	Dissolved Oxygen (mg/L)	pH
Surface	0.85	10/13/2010 10:15:00 AM	27.00	0.130	88.98	7.23	5.97
Middle	2.98	10/13/2010 10:18:00 AM	26.73	0.130	90.41	7.39	6.04
Bottom	5.43	10/13/2010 10:20:00 AM	26.69	0.130	89.97	7.35	5.91
Mean Value	3.09	10/13/2010 10:25:00 AM	26.80	0.130	89.79	7.32	5.97

Lake Alice seems to be well mixed (water chemistry is consistent down the water column) and exhibits a healthy level of dissolved oxygen and should provide a good habitat for fish and other aquatic plants and animals.

To better understand many of the terms used in this report, we recommend that the reader visit the [Hillsborough County & City of Tampa Water Atlas](#) and explore the “Learn More” areas which are found on the resource pages. Additional information can also be found using the [Digital Library](#) on the Water Atlas website.

Section 4: Conclusion

Lake Alice is a medium area (87.07-acre) lake that would be considered in the Mesotrophic category of lakes based on water chemistry. It has a plant diversity of 48 species relative to the total watershed plant diversity of 177 species with about 83.00 % percent of the open water areas containing submerged aquatic vegetation. Vegetation helps to maintain the nutrient balance in the lake as well as provide good fish habitat. The lake has many open water areas to support various types of recreation and has a good diversity of plant species. The primary pest plants in the lake include *Panicum repens*.

The lake vegetative assessment also was used to calculate a Lake Vegetative Index (LVI) for the lake (See Note 4). The LVI can be used to help determine if a lake is impaired in terms of types and quantities of vegetation found in and along the lake shore. An LVI threshold of 37 is used by FDEP to establish a point below which the lake could be considered heavily disturbed and possibly impaired. This threshold is intended to assist the analyst in classifying a lake as impaired when used with water quality data. For example, a clear water lake may have a TSI of 42 but have an LVI of 70. Since the LVI is significantly above the threshold and indicates low human disturbance, the analyst might declare the lake unimpaired even with a TSI slightly above the water quality threshold for a clear lake. An LVI was conducted by FDEP August of 2010 for Lake Alice. The lake's LVI score was 59 which indicates a reasonably healthy lake with little human caused disturbance.

This assessment was accomplished to assist lake property owners to better understand and manage their lakes. Hillsborough County supports this effort as part of their [Lake Management Program \(LaMP\)](#) and has developed guidelines for lake property owner groups to join the LaMP and receive specific assistance from the County in the management of their lake. For additional information and recent updates please visit the [Hillsborough County & City of Tampa Water Atlas](#) website. A volunteer is needed to take LAKEWATCH water chemistry samples for this lake. The lack of consistent water chemistry data hampers efforts to monitor change in the lake and to assist lake property owners in the management of this lake. To volunteer for the LAKEWATCH program click "[LAKEWATCH](#)" to be directed to the Water Atlas Volunteer Page or use your web browser to go to: <http://www.hillsborough.wateratlas.usf.edu/forms/volunteer.asp>.

Lake Assessment Notes

1. The trophic state index is used by the Water Atlas to provide the public with an estimate of their lake resource quality. A "Good" quality lake is one that meets all lake use criteria (swimmable, fishable and supports healthy habitat). Based on the discussion above, lakes that are in the oligotrophic through low eutrophic range, for the most part, meet these criteria. A trophic state below 60 indicates lakes in this range and these lakes are given the "Good" descriptor. A trophic state above 60 but below 70 can be considered highly productive and a reasonable lake for fishing and most water sports. This lake is considered "Fair", while a lake in the Hypereutrophic range with a TSI greater than 70 will probably not meet the lake use criteria and these lakes are considered to be poor. Please see Table 10 below.

Table 10. Comparison of Classification Schemes

Trophic State Index	Trophic State Classification	Water Quality
0 – 59	Oligotrophic through Mid-Eutrophic	Good
60 – 69	Mid-Eutrophic through Eutrophic	Fair
70 – 100	Hypereutrophic	Poor

Also see the [Florida LAKEWATCH](#) publication, "[Trophic State: A Waterbody's Ability to Support Plants Fish and Wildlife](#)" and the [Trophic State Index Learn More page](#) on the [Hillsborough County & City of Tampa Water Atlas](#).

In recent years FDEP staff have encountered problems interpreting Secchi depth data in many tannic (tea or coffee-colored) waterbodies where transparency is often reduced due to naturally-occurring dissolved organic matter in the water. As a result, Secchi depth has been dropped as an indicator in FDEP's recent TSI calculations ([1996 Water-Quality Assessment for The State of Florida Section 305\(b\) Main Report](#)). This modification for black water TSI calculation has also been adopted by the Water Atlas.

Also, according to Florida LAKEWATCH use of the TSI is often misinterpreted and/or misused from its original purpose, which is simply to describe biological productivity. It is not meant to rate a lake's water quality. For example, higher TSI values represent lakes that support an abundance of algae, plants and wildlife. If you love to fish, this type of lake would not be considered to have "poor" water quality. However, if you are a swimmer or water skier, you might prefer a lake with lower TSI values.

The trophic state index is one of several methods used to describe the biological productivity of a waterbody. Two scientists, Forsberg and Ryding, 1980, developed another method that is widely used. It's known as the Trophic State Classification System. Using this method, waterbodies can be grouped into one of four categories, called trophic states:

Oligotrophic (oh-lig-oh-TROH-fik) where waterbodies have the lowest level of productivity;

Mesotrophic (mees-oh-TROH-fik) where waterbodies have a moderate level of biological productivity;

Eutrophic (you-TROH-fik) where waterbodies have a high level of biological productivity;

Hypereutrophic (HI-per-you-TROH-fik) where waterbodies have the highest level of biological productivity. The trophic state of a waterbody can also affect its use or perceived utility. Figure 10 illustrates this concept.

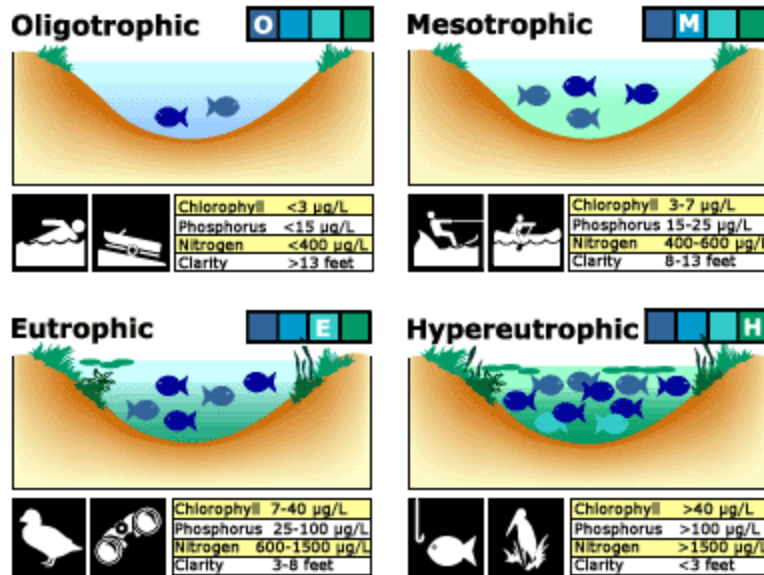
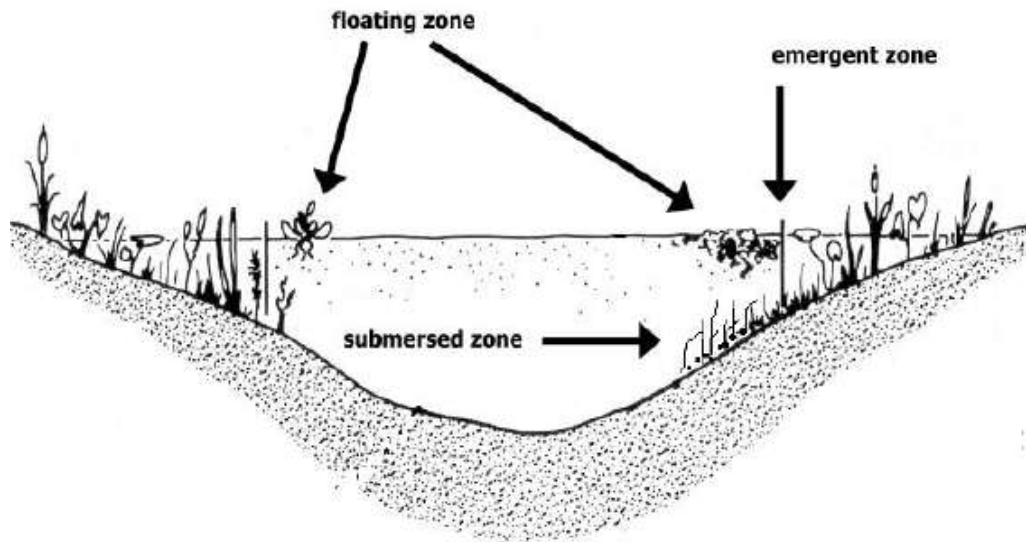


Figure 10. Tropic States

2. **Wide Area Augmentation System (WAAS)** is a form of differential GPS (DGPS) where data from 25 ground reference stations located in the United States receive GPS signals from GPS satellites in view and retransmit these data to a master control site and then to geostationary satellites. The geostationary satellites broadcast the information to all WAAS-capable GPS receivers. The receiver decodes the signal to provide real time correction of raw GPS satellite signals also received by the unit. WAAS-enabled GPS is not as accurate as standard DGPS which employs close by ground stations for correction, however; it was shown to be a good substitute when used for this type of mapping application. Data comparisons were conducted with both types of DGPS employed simultaneously and the positional difference was determined to be well within the tolerance established for the project.
3. The three primary aquatic vegetation zones are shown below:



4. The Lake Vegetation Index (LVI) is a rapid assessment protocol in which selected sections of a lake are assessed for the presence or absence of vegetation through visual observation and through the use of a submerged vegetation sampling tool called a Frodus. The

assessment results provide a list of species presents and the dominant and where appropriate co-dominant species that are found in each segment. These results are then entered into a scoring table and a final LVI score is determined. LVI scores provide an estimate of the vegetative health of a lake. Our assessment team was trained and qualified by FDEP to conduct these assessment as an independent team and must prequalify each year prior to conducting additional assessments. The LVI method consists of dividing the lake into twelve pie-shaped segments (see diagram below) and selecting a set of four segments from the twelve to include in the LVI. The assessment team then travels across the segment and identifies all unique species of aquatic plant present in the segment. Additionally, a Frodus is thrown at several points on a single five-meter belt transect that is established in the center of the segment from a point along the shore to a point beyond the submerged vegetation zone. For scoring, the threshold score for impairment is 37. Below is a table of LVI scores recorded in Hillsborough County for comparison:

Lake Name	Sample Date	LVI Score
Lake Magdalene	5/26/2005	64
Lake Magdalene	10/20/2005	38
Burrell Lake, off Nebraska in Lutz area. Ambient Monitoring Program	8/4/2005	16
Silver lake just south of Waters between Habana and Himes Avenues, Tampa. Ambient Monitoring Program	7/29/2005	36
Unnamed lake on Forest Hills Drive south of Fletcher Avenue. Ambient Monitoring Program	8/3/2005	34
Hanna Pond, off Hanna Rd in Lutz. Ambient Monitoring Program	7/25/2005	38
Small lake, Lutz, just east pf Livingston. Ambient Monitoring Program	7/22/2005	39
Small lake, Lutz, adj to Lake Keene. Ambient Monitoring Program	8/5/2005	28
Unnamed small lake, Tampa, off Fowler behind University Square Mall. Ambient Monitoring Program	7/19/2005	16
Tiffany Lake, Lutz, north of Whittaker. Ambient Monitoring Program	7/25/2005	40
Cedar Lake, south of Fletcher, Forest Hills. Ambient Monitoring Program	7/22/2005	37
Unnamed small lake behind Natives Nursery, Lutz. Ambient Monitoring Program	8/5/2005	20
Unnamed lake on Curry Road off Livingston, Lutz. Ambient Monitoring Program	7/19/2005	46
Unnamed lake in Lutz. Ambient Monitoring Program	7/20/2005	45
Lake Josephine - HIL538UL	10/12/2006	40
Lake Magdalene - HIL546UL	10/18/2006	40
Starvation Lake - HIL540NL	9/28/2006	48
Egypt Lake - HIL556UL	10/31/2006	34
Unnamed Lake - HIL544UL	9/25/2008	58
Lake Rogers - L63P	7/22/2009	65
Lake Alice/Odessa, profundal zone	8/6/2009	71
Lake Carroll (Center)	7/15/2009	64
Unnamed Small Lake - Z4-SL-3011	7/21/2009	24
Unnamed Small Lake - Z4-SL-3020	7/21/2009	40
Lake Ruth - Z4-SL-3031	7/16/2009	71
Lake Juanita - Z4-SL-3036	7/20/2009	72
Chapman Lake	6/8/2009	42
Island Ford Lake	8/10/2010	50
Lake Magdalene	7/29/2010	56
Lake Stemper	7/13/2010	38
Lake Carroll	7/20/2010	57

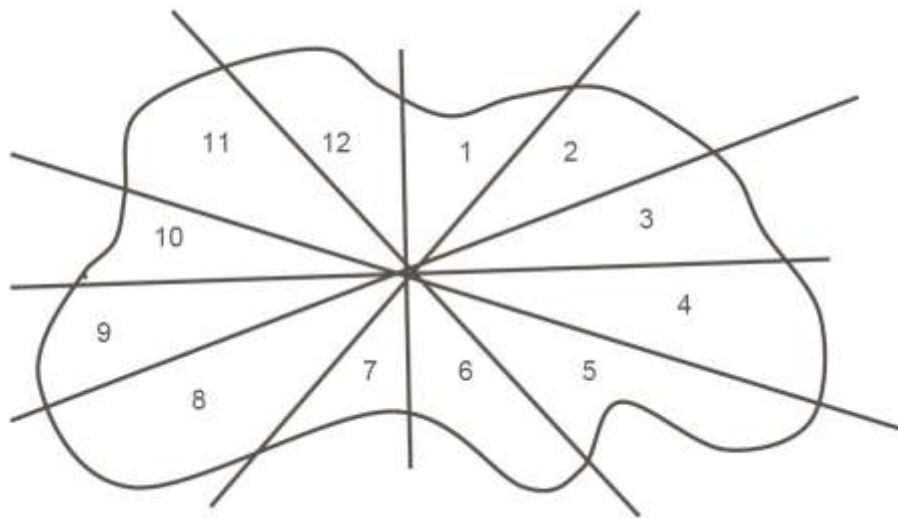
5.

Reference: "[Assessing the Biological Condition of Florida Lakes: Development of the Lake Vegetation Index \(LVI\) Final Report](#)", December, 2007, page 7. Prepared for: Florida Department of Environmental Protection, Twin Towers Office Building, 2600 Blair Stone Road, Tallahassee, FL 32399-2400, Authors: Leska S. Fore*, Russel Frydenborg**, Nijole Wellendorf**, Julie Espy**, Tom Frick**, David Whiting**, Joy Jackson**, and Jessica Patronis**

* Statistical Design

** Florida Department of Environmental Protection

Diagram showing the method used to divide a typical lake into 12 sections for replicate sampling:



6. A lake is **impaired** if: "For the purposes of evaluating nutrient enrichment in lakes, TSIs shall be calculated based on the procedures outlined on pages 86 and 87 of the State's 1996 305(b) report, which are incorporated by reference. Lakes or lake segments shall be included on the planning list for nutrients if: (1) For lakes with a mean color greater than 40 platinum cobalt units, the annual mean TSI for the lake exceeds 60, unless paleolimnological information indicates the lake was naturally greater than 60, or (2) For lakes with a mean color less than or equal to 40 platinum cobalt units, the annual mean TSI for the lake exceeds 40, unless paleolimnological information indicates the lake was naturally greater than 40, or (3) For any lake, data indicate that annual mean TSIs have increased over the assessment period, as indicated by a positive slope in the means plotted versus time, or the annual mean TSI has increased by more than 10 units over historical values. When evaluating the slope of mean TSIs over time, the Department shall require at least a 5 unit increase in TSI over the assessment period and use a Mann's one-sided, upper-tail test for trend, as described in Nonparametric Statistical Methods by M. Hollander and D. Wolfe (1999 ed.), pages 376 and 724 (which are incorporated by reference), with a 95% confidence level."

References: 62-303.352—Nutrients in Lakes. Specific Authority 403.061, 403.067 FS. Law Implemented 403.062, 403.067 FS. History - New 6- 10-02, Amended 12-11-06. Please see page 12 of the [Impaired Waters Rule](#). Updated activity regarding impaired waters may be tracked at: <http://www.dep.state.fl.us/water/tmdl/>

7. An **adjusted chlorophyll a value** ($\mu\text{g/L}$) was calculated by modifying the methods of Canfield et al (1983). The total wet weight of plants in the lake (kg) was calculated by multiplying lake surface area (m^2) by PAC (percent area coverage of macrophytes) and multiplying the product by the biomass of submersed plants (kg wet weight m^2) and then by 0.25, the conversion for the 1/4 meter sample cube. The dry weight (kg) of plant material was calculated by multiplying the wet weight of plant material (kg) by 0.08, a factor that represents the average percent dry weight of submersed plants (Canfield and Hoyer, 1992) and then converting to grams. The potential phosphorus concentration (mg/m^3) was calculated by multiplying dry weight (g) by 1.41 mg TP g⁻¹ dry weight, a number that represents the mean phosphorus (mg) content of dried plant material measured in 750 samples from 60 Florida lakes (University of Florida, unpublished data), and then dividing by lake volume (m^3) and then converting to $\mu\text{g/L}$ (1000/1000). From the potential phosphorus concentration, a predicted chlorophyll a concentration was determined from the total phosphorus and chlorophyll a relationship reported by Brown (1997) for 209 Florida lakes. Adjusted chlorophyll a concentrations were then calculated by adding each lake's measured chlorophyll a concentration to the predicted chlorophyll a concentration.