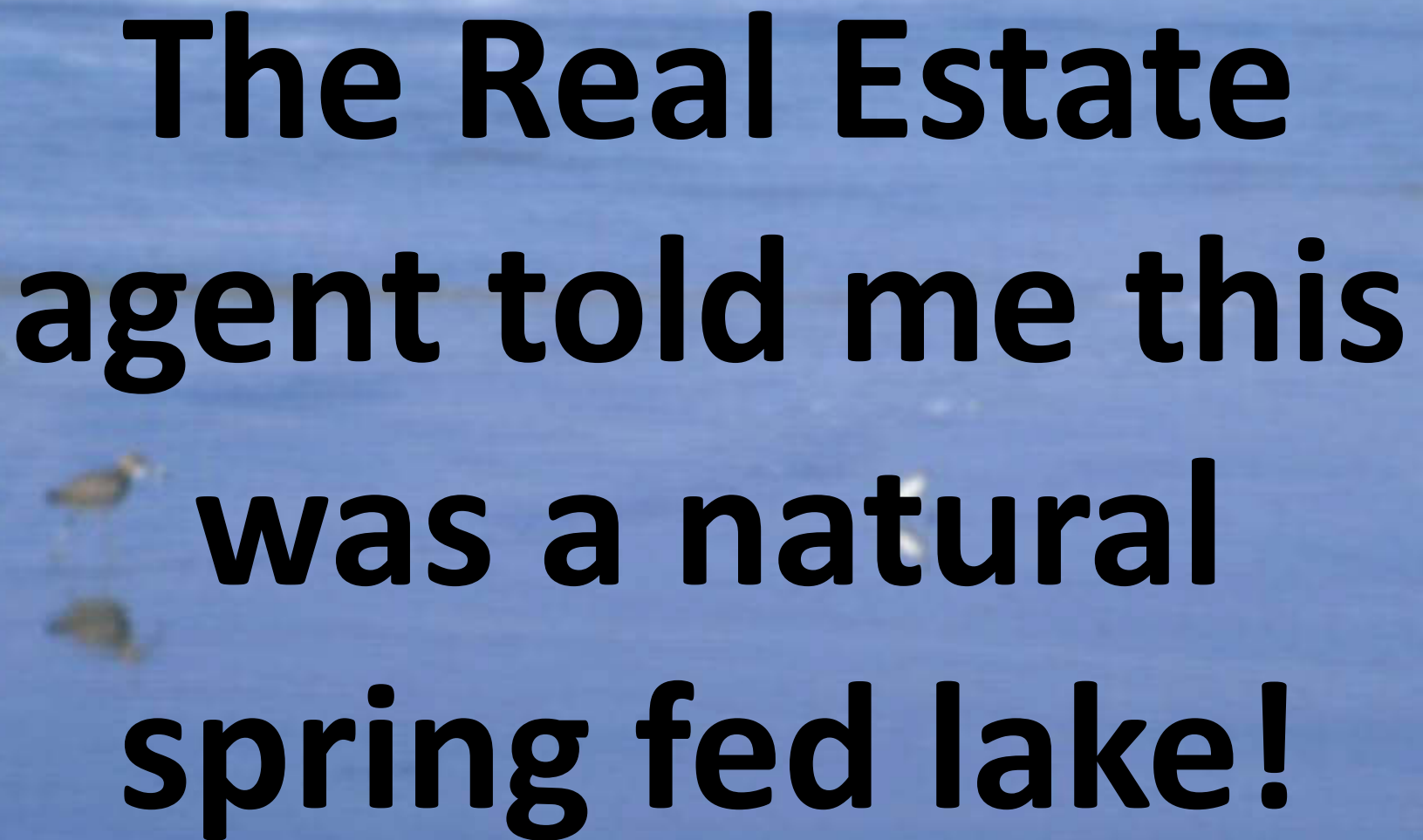
The background of the slide is a photograph of a bright blue sky with wispy white clouds. A small, dark bird is captured in flight on the left side of the frame. The text is overlaid in the center in a large, bold, black font.

**What happened
to my natural
spring fed lake?**



**The Real Estate
agent told me this
was a natural
spring fed lake!**

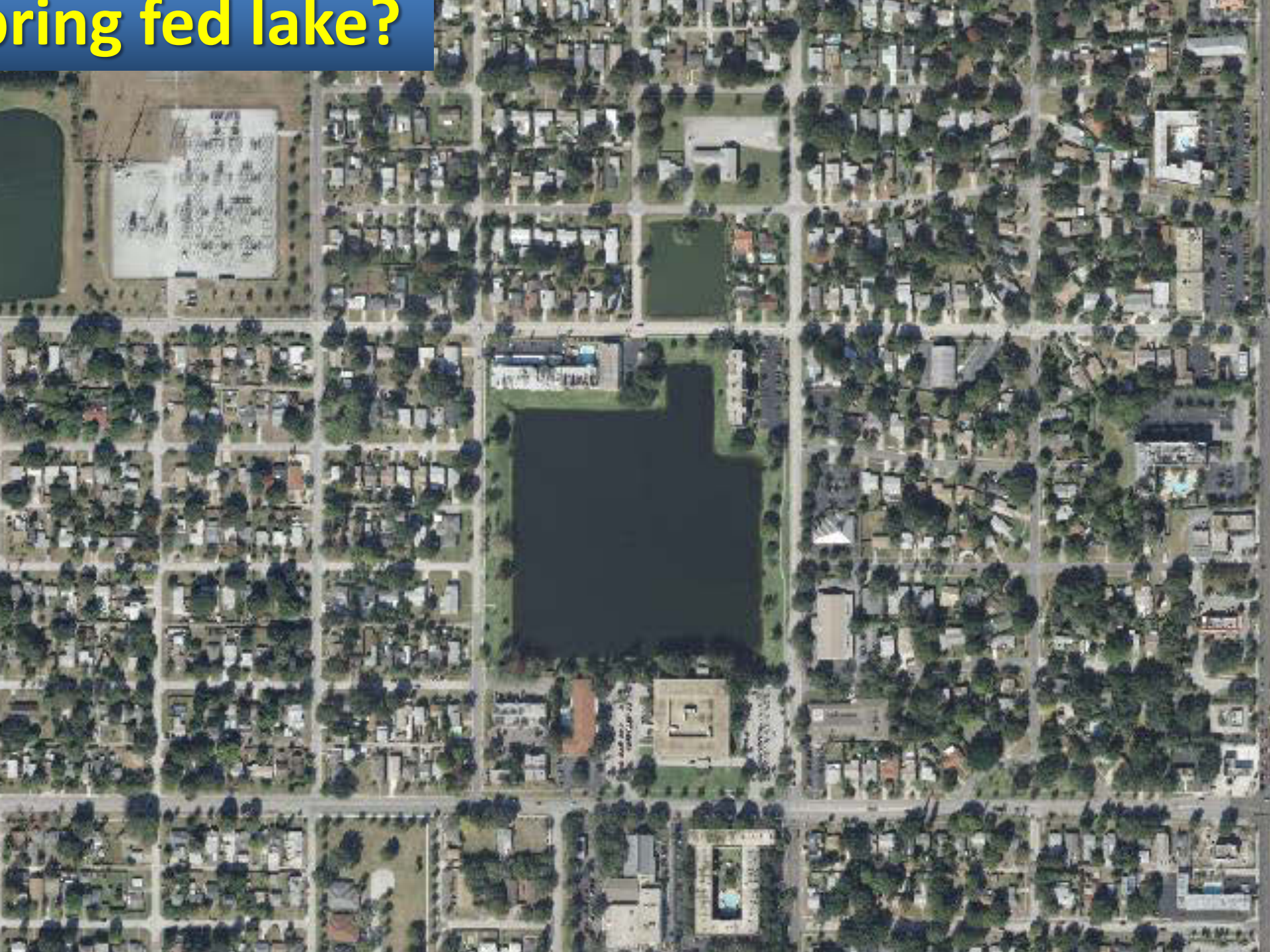


**The neighbors say
this pond used to
be crystal clear!**

spring fed lake?



Spring fed lake?



is a spring fed lake?



a spring fed lake?



1926 Aerial photo from PAIRS

ST. PETER



An aerial photograph of a beach. The top of the image shows white-capped waves crashing onto a sandy shore. The middle and bottom portions of the image show the blue ocean water. A single bird is visible on the sand in the lower-left quadrant. The text is overlaid in the center of the image.

Using Pinellas County's Aerial Image Retrieval System: PAIRS

<http://www.pinellascounty.org/PublicWorks/Services.htm>

PAIRS

- PAIRS contains aerial images from 1926 to 2000
- Quality varies
- Scale varies
- The key is to find 'landmarks' in your image to *georectify* between years



Marina St. Petersburg

Official Government Website



Online Services

pay taxes, renew driver licenses, park shelter reservations



Business

building permits, vendor application, explore international opportunities



Government

elected officials, courts, administrator, departments, meetings and agendas



Residents

local issues, adopt a pet, taxes, consumer info, housing, jobs.

Top Searches

- 9-1-1 Active Calls
- BCC Meeting
- Jobs
- Parks & Recreation
- Permits
- Pet Adoptions
- Property Appraiser
- Public Records
- Utilities

Special Interest

- Budget Information
- Citizen Survey Results
- EMS Study
- Mosquitoes
- Proposed Stormwater Fee
- SeeClickFix
- Watering Restrictions
- Watershed: Live-Work-Play



Public Meetings

schedules, agendas, watch board meetings live!



Emergency Info

look up evacuation zone, 9-1-1 calls, hurricane preparedness



Upcoming Events

events, programs and classes sponsored by the County



MapIt

find what's near you, GIS info, look up evacuation levels, more



Volunteer Today

get involved and share your cost-saving ideas.



COUNTY INFORMATION DESK
LiveChat: OPEN



Official Government Website

SEARCH RESULTS 1 - 10 of 528 total results for PAIRS

Advanced Search Sort By Date | Hide Summaries Next 10

PAIRS

New Search



1. Pinellas County Public Works Services

...PAIRS - Pinellas Aerial Image Retrieval System...
...Click on the ABOVE link to enter PAIRS Download P.A.I.R.S. User Manual...
60% Mon, 15 Apr 2013 21:00:37 GMT, http://www.pinellascounty.org/PublicWorks/Services.htm

2. Cat-Predation-Impacts-Report.pdf

...shores. In 2005, approximately 390 plover pairs were counted at 80 sites. Wildlife...
...of at least two four-egg nests. Another pair lost four chicks in an area of high...
...pair lost two four-egg nest attempts in an area covered with cat tracks. A plover...
52% Wed, 09 Jun 2010 18:41:58 GMT, http://www.pinellascounty.org/animalservices/pdf/Cat-Predation-Impacts-...

3. OPUS Presentation

...8 VIII. PAIRS Replacement Request Pinellas Aerial Image Retrieval System (PAIRS)...
...images (http://pubgis.co.pinellas.fl.us/pairs/index.cfm). This is using old...
...in regards to the PAIRS replacement. In the case of PAIRS, the main users are...
51% Fri, 29 Jul 2011 17:30:37 GMT, http://www.pinellascounty.org/egis/pdf/2011-07-07-EGIS-Minutes.pdf

4. Microsoft Word - Divider Pages with Intro_Desktop Reference 09102007.doc

...All All 40 -7 Paired comparison Fatal/Injury All All All 40 -5 Paired comparison...
...40 -44 Paired comparison Lower posted speed by 10 mph All All All All 40 7 Paired...
...speed by 15-20 mph All All All All 40 5 Paired comparison Install raised pavement...
50% Wed, 23 Sep 2009 20:09:19 GMT, http://www.pinellascounty.org/PublicWorks/pdf/DesktopReference.pdf



Online Services

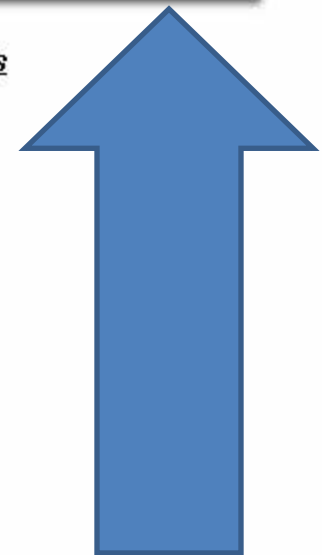
[Current Work Locations](#)[FAQ](#)[What We Do](#)[Intelligent Transportation \(ITS\)](#)[Capital Improvement Projects](#)[Standard Engineering Details](#)[Standard Technical Specs](#)[2013](#)[2011](#)[2010](#)[Hot Bituminous Specs](#)[Interactive Maps](#)[County Calendar](#)[Links](#)[Public Works Home](#)[PAIRS - Pinellas Aerial Image Retrieval System](#)

Pinellas County Public Works Services

Pinellas County Public Works PAIRS - Pinellas Aerial Image Retrieval System

[CLICK TO ENTER PAIRS](#)

Click on the ABOVE link to enter PAIRS

[Download P.A.I.R.S. User Manual](#)

Resources

Try the New
[Aerial Imagery Retrieval](#)
Self-Service Web Application for
2008-2011 Imagery

[Using PAIRS](#)

[Site Terms & Definitions](#)

[User Manual](#)

Viewing the MAP Index requires

MapGuide Viewer 

Upon Download, Aerial Image files
require [ERMapper Viewer](#)



PDF Files require
[Acrobat Reader](#)



[Public Works Home](#)

Pinellas Aerial Image Retrieval System

[Home](#)

[Help](#)

[Contact Us](#)

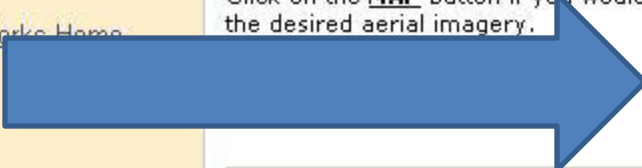


Click on the **[TEXT](#)** button if you know the aerial image you wish to print. You will then be taken to a list of the aerial images by the year in which they were flown.

TEXT

Click on the **[MAP](#)** button if you would like to geographically locate the area in which to obtain the desired aerial imagery.

MAP





Pinellas County Public Works

PAIRS - Pinellas Aerial Image Retrieval Sys

[Home](#) [Index](#) [Help](#) [Contact Us](#)

- Major Roads
- Local Streets
- County Outline
- Municipal Boundaries
- Zip Code Boundaries
- Full County 2000 Image
- Image Grid - 2000

Image Grid 1926 To 2000

-select

Viewing the MAP Index requires

[MapGuide Viewer](#)

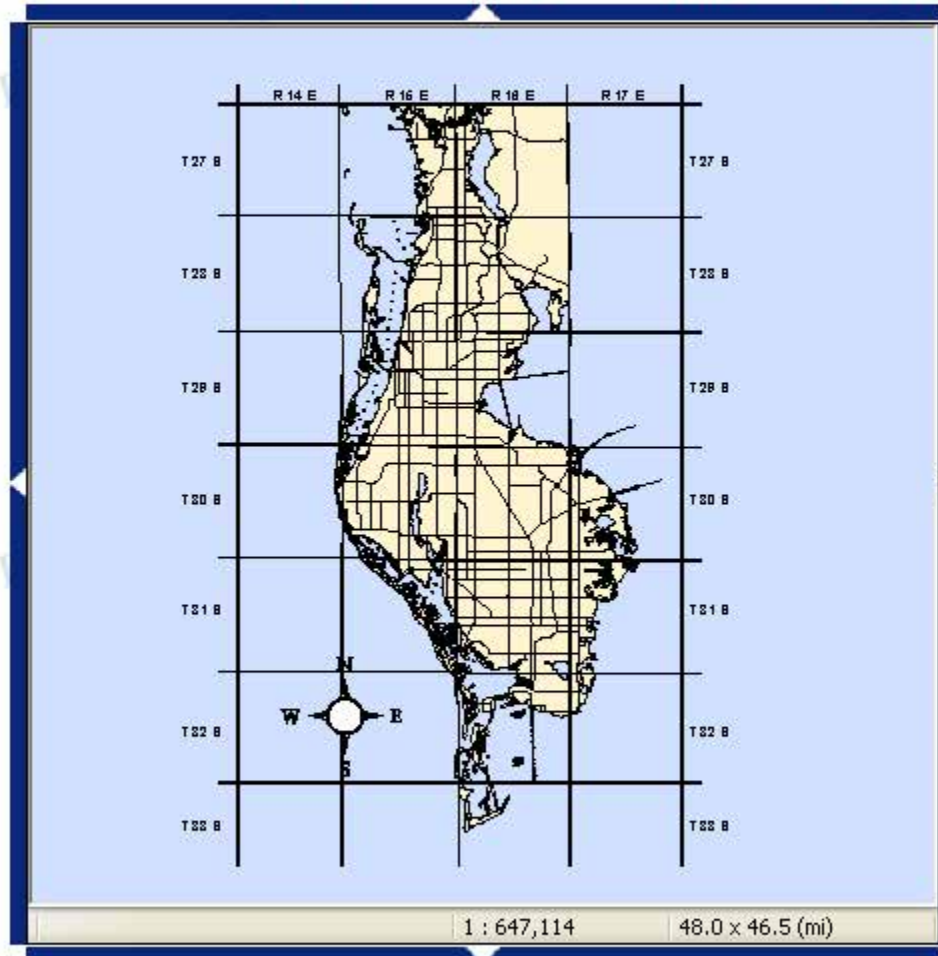


[Click to Download](#)

Upon Download,
Aerial Image Files require
[ERMapper Viewer](#)



[Click to Download](#)



1 : 647,114 48.0 x 46.5 (mi)

Width: mi km





Pinellas County Public Works

PAIRS - Pinellas Aerial Image Retrieval System

- Major Roads
- Local Streets
- County Outline
- Municipal Boundaries
- Zip Code Boundaries
- Full County 2000 Image
- Image Grid - 2000

Image Grid 1926 To 2000

1926

-select-

1926

1942

1951

1957

1965 [View MAP Index](#)

1967 [Requires](#)

1968 [Side Viewer](#)

1971 **Free Viewer!**

1973 [Download](#)

1975

1977 [Download](#)

1979 [The Files require](#)

1980 [per Viewer](#)

1984

1990

1994

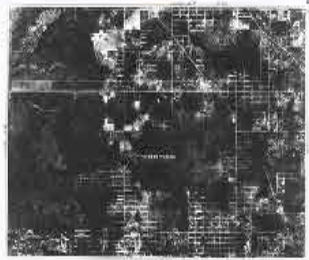
1997

2000



Width: mi km

-
-
-
-
-
-
-
-
-



Click on the image to enlarge

Year 1926

Scale 1" = 800"

ImageName 26_28

ImageSize 24 X 36 Inches

Sheet North No. 29 R. 76 E

T. 22 S



Sheet West No. 28

Sheet East No. 27

ST. PETERSBURG

AERIAL PHOTOGRAPHIC MAP Sheet South No. 31 Sheet South No. 30

PINELLAS COUNTY
FLORIDA

MARCH-APRIL-MAY 1928

MADE BY
HAMILTON MANAGE, INC.
NEW YORK CITY

Scale - 1 inch = 0.556 mi
MADE FOR & COPYRIGHT BY
W. L. HAMILTON

Steps to using PAIRS

- Study current image
- Identify landmarks, roads, things that likely will **not** change over the long-term
- These things will be used to “Georectify” your images
- Go to website and work backwards
- <http://pubgis.co.pinellas.fl.us/pairs/frames.cfm>
- The older the image, the harder it is to georectify

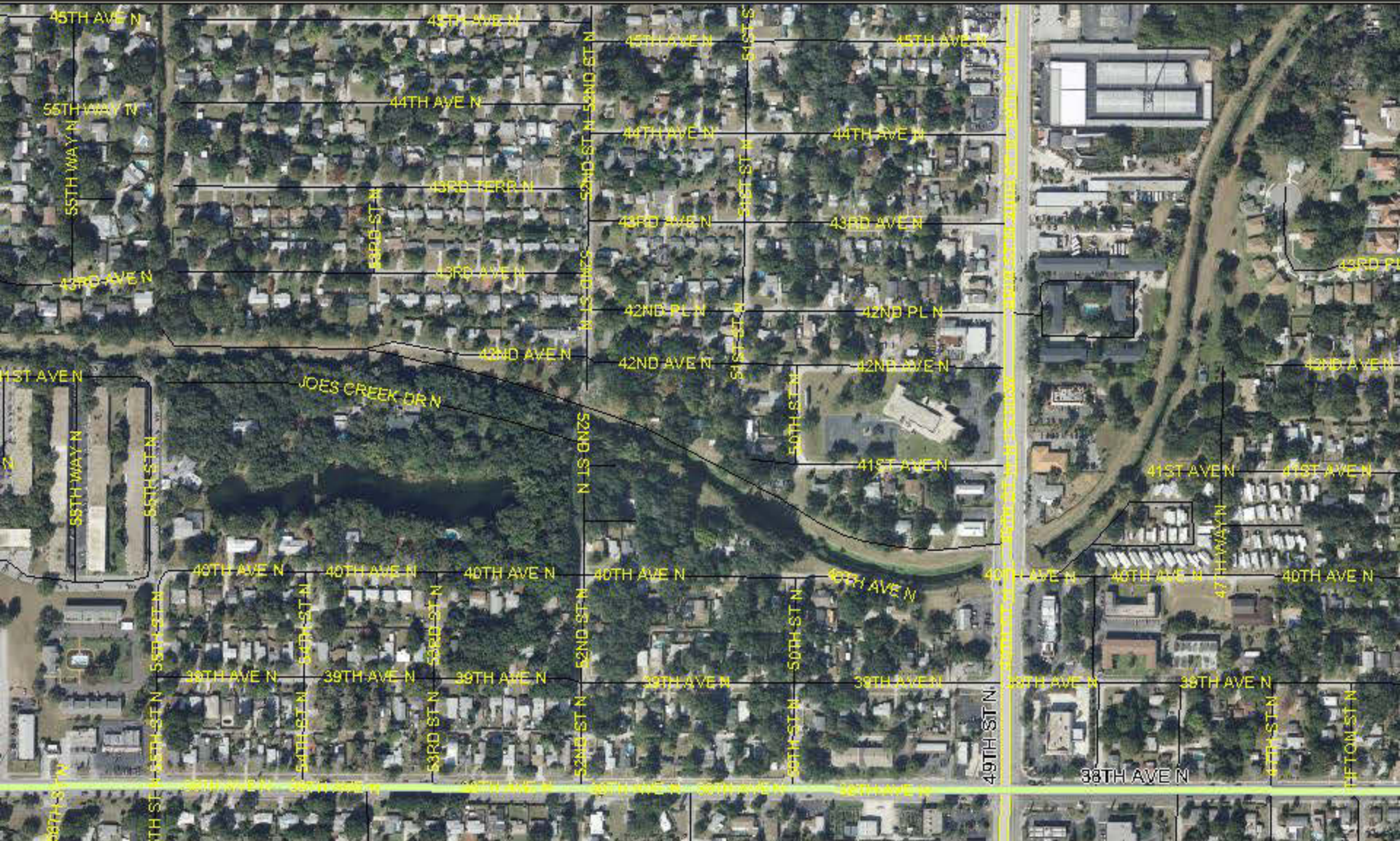
Countywide Layers

Tools

View

Layer Options

New Toolbar Help





1975



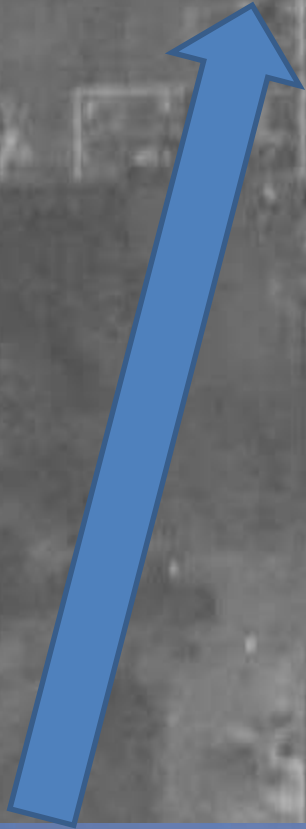
1967



1957

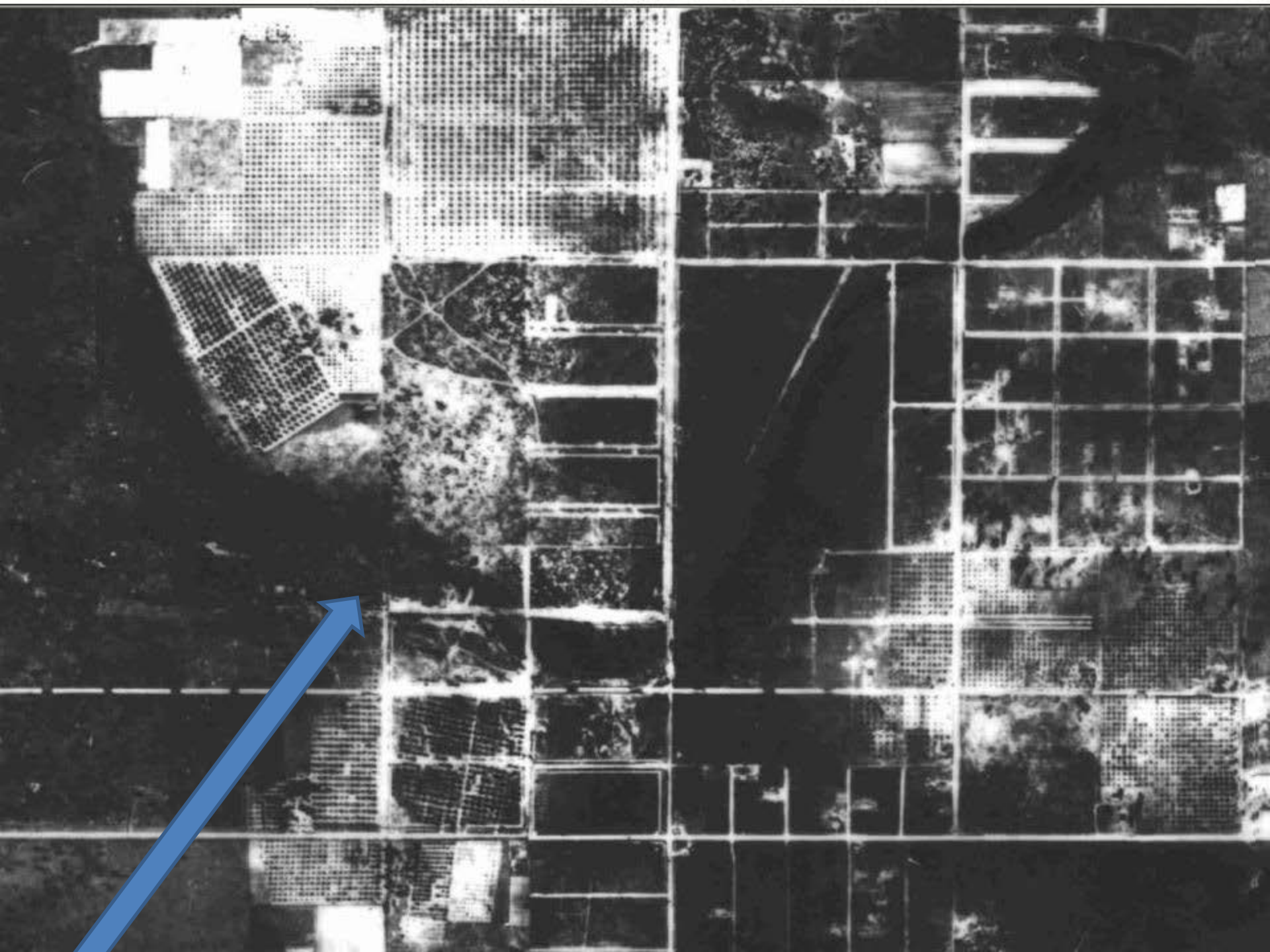
CYY-1H-15

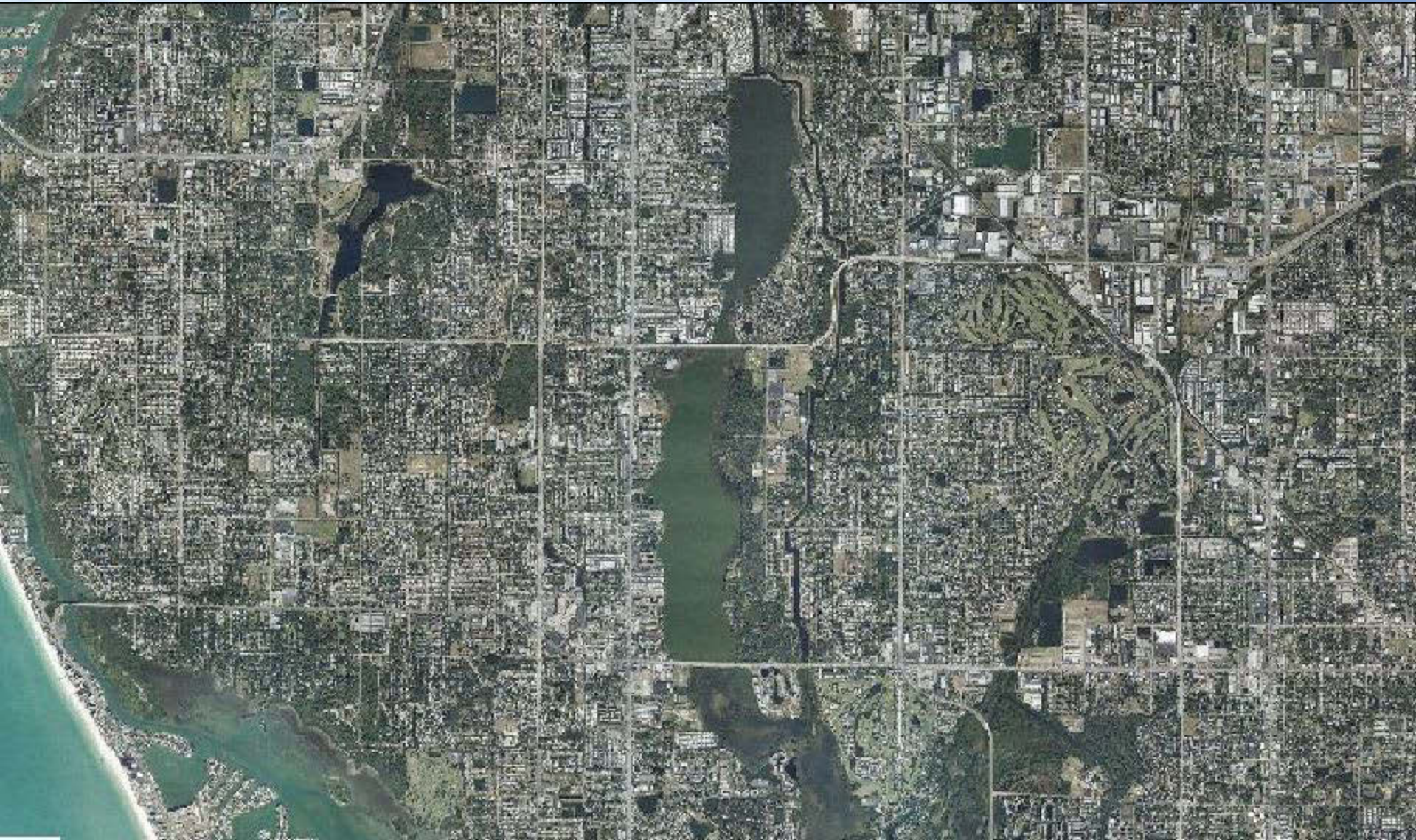
1951



1942





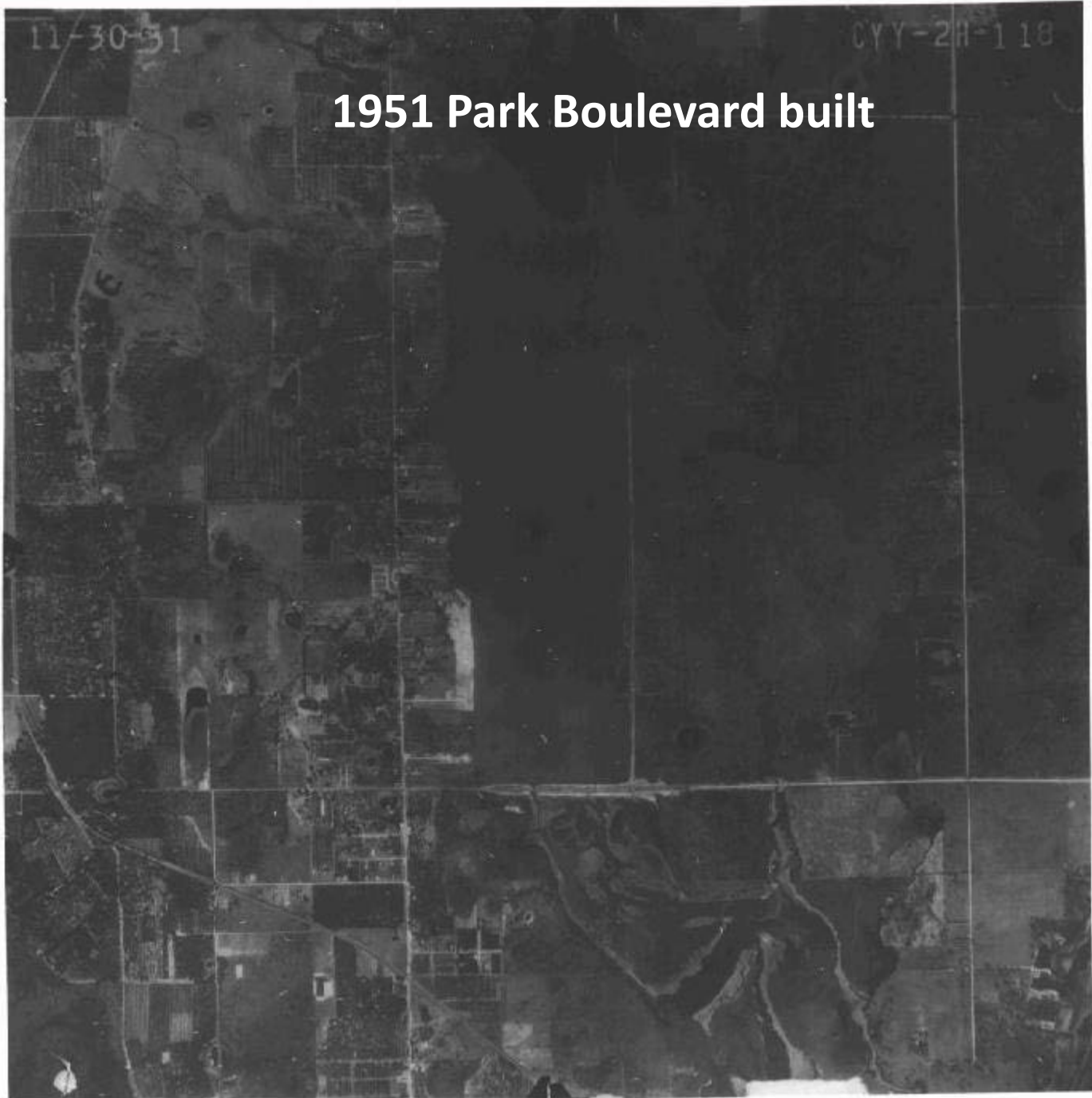


2009 aerial image of Lake Seminole

11-30-31

CYY-2H-1 18

1951 Park Boulevard built





1942-no Park Boulevard, no Lake Seminole

The background of the image is a blurred photograph of a beach. At the top, there are white, foamy waves crashing onto the shore. Below the waves, the ocean water is a deep blue. In the foreground, the sandy beach is visible, with two birds standing on it. The birds are out of focus, appearing as soft shapes. The overall scene is bright and natural, suggesting a coastal environment.

Questions??