



The lake assessments are created in partnership with Hillsborough County and the Florida Center for Community Design and Research
LAKE ASSESSMENT DOCUMENT

Long Pond 6/1/00 Watershed: Pemberton Creek

Lake assessments are being conducted to contribute physical and ecological data to the Atlas as a collaborative effort between project partners. The goal is to rapidly assess many of the lakes in the county and thus provide stakeholders a better understanding of the character of the lake, its shore, and the aquatic plants present there. These data are intended to assist in the future management of the lake and its watershed.

The first section of the report provides the results of the bottom mapping effort: a contour (bathymetric) map of the lake, area, volume and depth statistics, and the water level at the time of assessment (if available).

The second section provides the results of the ecological (vegetation) assessment conducted on the lake. These results can be used to better manage vegetation in your lake. A list is provided with the different plant species found at various sites around the lake. Potentially invasive, exotic (non-native) species are identified in a plant list and the percent of exotics is presented in a summary table. The results of this study are compared with other lakes in the watershed.

The intent of the assessment is to provide a starting point from which to track changes in your lake. These data can provide the information needed to determine changes and to monitor trends in physical condition and ecological health of the lake.

I. Physical Data – Area, Depth, Volume, & Bottom Contours

The bottom of the lake was mapped using a sophisticated Global Positioning System (GPS) to determine the boat's position, and a depth-finder to provide depth associated with that measured position. The result is an estimate of your lake's area, mean and maximum depths, and volume (Table 1) and the creation of a bottom contour map.

Table 1. Physical Characteristics of Your Lake.

Surface Area (acres):	<u>65</u>
Mean Depth (feet):	<u>7.1</u>
Maximum Depth (feet):	<u>13.9</u>
Volume (gallons):	<u>149,095,741</u>

Long Pond

Section-Township-Range
12-29-20 13-29-20

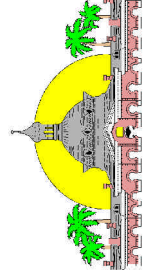
- Contour Lines
Expressed in
2- Foot Intervals
- Lake Perimeter
ground level

EXPLANATION:
Survey date May 12, 1999.

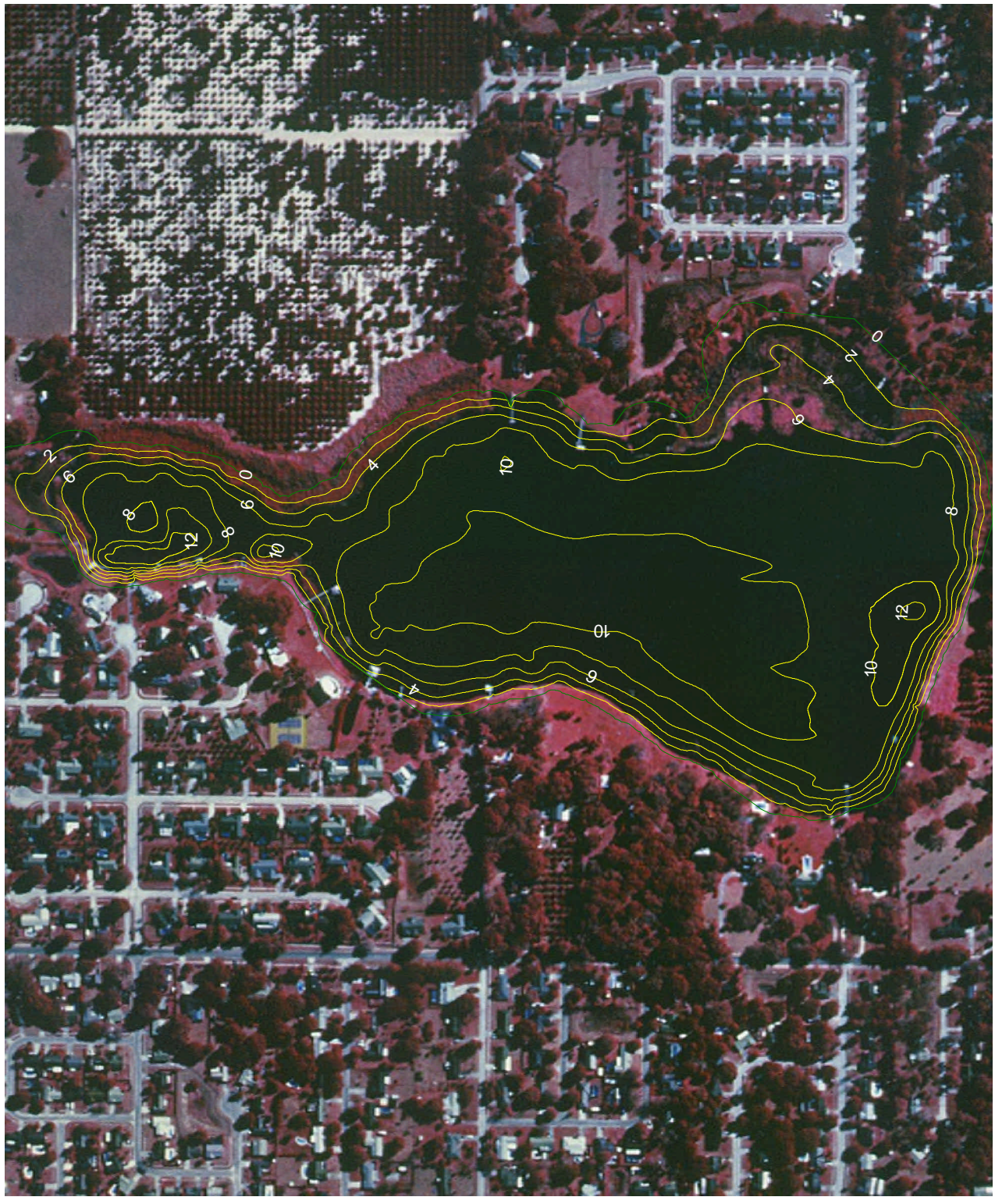
Explanation:
Lake water level was 45.45 ft
above Mean Sea Level when
the lake was surveyed. Contours
are expressed in absolute depth
below this level.

DATA SOURCES:
Digital orthophotos by United States
Geological Survey. All contours
generated by Florida Center for
Community Design and Research
based on survey data provided by
the Hillsborough County Lake
Management Program.

50 0 50 100 Meters



Hillsborough County





The lake assessments are created in partnership with Hillsborough County and the Florida Center for Community Design and Research

LAKE ASSESSMENT DOCUMENT

Long Pond 6/1/00 Watershed: Pemberton Creek

II. Ecological Data

Aquatic Plant Survey

Approximately equispaced sites are haphazardly mapped around the lake and the aquatic plants at each site are surveyed. The total number of species from all sites is used to approximate the total diversity of aquatic plants and the percent of invasive-exotic plants on the lake and in the watershed (Table 2). Many of these plants are considered ecologically harmful, as they tend to out-compete native species. Such “nuisance” plants can also make boating and other recreational activities difficult or impossible. The common and scientific names of plant species found on your lake are listed in Table 3.

Table 2. Comparison of species diversity between your lake and other assessed lakes located within your watershed.

	<u>Long Pond</u>	<u>Pemberton Creek</u> (Average)
Number of Taxa:	18	19
Percent Exotic Plants:	11%	20%

Table 3. Botanical and common names of the most commonly found plants on your lake. Percent frequency (of occurrence), habit (location where found), status (native or exotic), and EPPC status are provided.

Common Name	Plant Species	Frequency	Habit	Status	EPPC
Sedge	Cyperus spp.	60%	Emergent	Unknown	NL
Torpedo Grass	Panicum repens	50%	Emergent	Exotic	I
Smartweed, Knotweed	Polygonum spp.	50%	Emergent	Native	NL
Baldwin's Spikerush, Roadgrass	Eleocharis baldwinii	40%	Submersed	Native	NL
Manyflower Marshpennywort, Water Penny	Hydrocotyl umbellata	40%	Emergent	Native	NL
Unidentified Plant Species	UNKNOWN SPP	40%	Unknown	Unknown	Unknow
Water Primroses, Primrosewillow	Ludwigia spp.	30%	Emergent	Unknown	NL
Sedge	Scirpus spp.	20%	Emergent	Unknown	NL
Common Bacopa, Herb-Of-Grace	Bacopa monnieri	10%	Submersed	Native	NL
Atlantic White Cedar	Chamaecyparis thyoides	10%	Emergent	Native	NL
Inkberry, Gallberry	Ilex glabra	10%	Emergent	Native	NL
Rush	Juncus spp.	10%	Emergent	Native	NL
Spatterdock, Yellow Pondlily	Nuphar lutea var. advena	10%	Floating	Native	NL
Bitter Dock	Rumex obtusifolius	10%	Emergent	Exotic	
Willow	Salix spp.	10%	Emergent	Native	NL
Water Spangles, Water Fern	Salvinia minima	10%	Floating	Native	NL

Long Pond

6/1/00

Watershed: Pemberton Creek

Cypress	Taxodium spp.	10%	Emergent	Native	NL
Cattails	Typha spp.	10%	Emergent	Native	NL

Standing Crop

In addition to an overall survey of the types of plants on a lake, an estimate of the standing crop (biomass) of the lake has been obtained for many lakes. This was done by calculating the average weight of the vegetation within a quarter-meter square quadrat tossed haphazardly into three zones (see Figure) at each sampling site around the lake: (1) the emergent zone, (2) the floating zone and (3) the submersed zone. The average weight of the plants (Table 4) from all sampling sites and the dominant type of vegetation (Table 5) are provided. If data tables are not shown, no standing crop estimates were obtained for this lake.

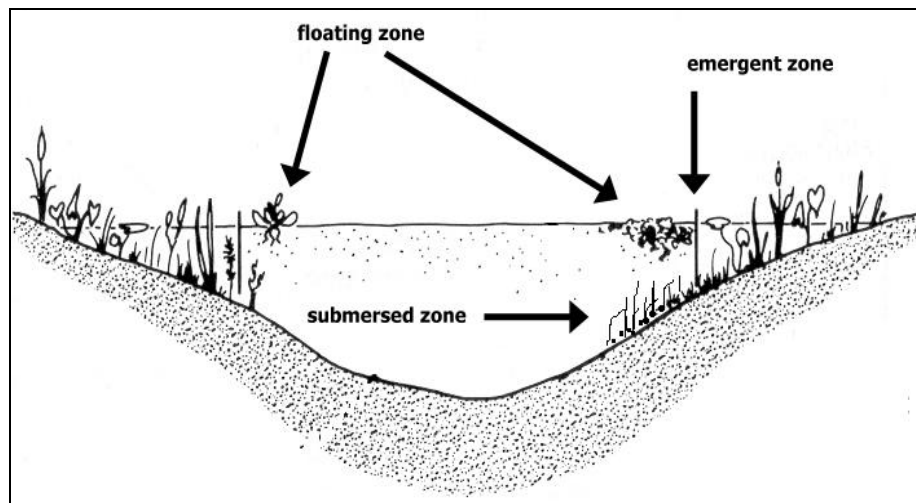


Table 4. Comparison between the average biomass from three zones within your lake and among all lakes assessed within your watershed.

	<u>Long Pond</u>	<u>Pemberton Creek</u> (Average)
Emergent Zone:	1.00	2.87
Floating Zone:	0.02	0.27
Submersed Zone:	0.02	1.46

Number of lakes sampled in your watershed: 3

Note: All biomass measurements are shown in kilograms per square meter.

Table 5. Dominant taxa from three zones within your lake.

<u>Zone</u>	<u>Dominant Plant</u>	<u>Status</u>
Emergent Zone:		
Floating Zone:	Water Spangles, Water Fern	Native
Submersed Zone:	Baldwin's Spikerush, Roadgrass	Native